

# New Faculty Orientation

August 20, 2024



# Agenda

- 8:30–9:00 a.m. **Welcome/Introductions**  
Kyle Squires, dean and senior vice provost of engineering, computing and technology
- 9:00–9:15 a.m. **Academic personnel in the Fulton Schools of Engineering (FSE)**  
Lenore Dai, vice dean of faculty administration
- 9:15–9:30 a.m. **FSE values, faculty onboarding, and inclusive excellence**  
Jennifer Bekki, associate dean of inclusive excellence
- 9:30–9:45 a.m. **Resources from the Learning and Teaching Hub**  
Scott Mahler, senior director, FSE Learning and Teaching Hub
- 9:45–10:00 a.m. **Changing Futures — for Arizona. For the world: Industry engagement and philanthropic giving in the Fulton Schools of Engineering**  
David Wahls, executive director, Development
- 10:00–10:15 a.m. **Achieving impact through research and entrepreneurship in the Fulton Schools of Engineering**  
Zachary Holman, vice dean for research and innovation, and Visar Berisha, associate dean of research and commercialization

- 10:15–10:30 a.m. **Amplifying innovation in the Fulton Schools of Engineering: Communications strategies and resources**  
Lanelle Strawder, assistant director, Marketing and Communications
- 10:45–11:00 a.m. **FSE space planning, projects and infrastructure**  
Ricardo Reina, director of facilities
- 11:00–11:15 a.m. **FSE lab safety culture**  
Rita Bottesch, assistant director of infrastructure and safety
- 11:15–11:30 a.m. **What can NFAC do for you?**  
Nicholas Rolston, assistant professor, School of Electrical, Computer and Energy Engineering, and new faculty advisory council (NFAC) chair
- 11:30–11:45 a.m. **Overview of the Academic and Student Services**  
James Collofello, vice dean of academic and student affairs
- 11:45–12:00 p.m. **Open for questions**  
Lenore Dai, vice dean of faculty administration

# **New Faculty Orientation**

**The Fulton Schools of Engineering**

**Direction vis-à-vis our goals**

**What we seek from our faculty –  
keys to success**

**#1**  
**in the U.S. for  
innovation**



**ASU ahead of MIT and Stanford**  
**— U.S. News & World Report,**  
**9 years, 2016–24**

## ASU Charter

ASU is a comprehensive public research university, measured not by whom it excludes, but by **whom it includes** and how they succeed; advancing **research and discovery** of public value; and assuming **fundamental responsibility** for the economic, social, cultural and overall health of the **communities it serves.**



# At the Fulton Schools, we:

Cultivate **excellence**.

Deliver **innovation** that matters.

Encourage **bold thinking**.

Foster a community of learning  
and **collaboration**.

Build a **foundation for all** to  
be successful.

# Fulton Schools of Engineering in fall 2024

**50+**

graduate  
degree  
programs

**27**

Undergraduate  
degree  
programs

**#3** for licenses & options  
**#3** patents  
**#2** for startups

**33,000+**

students (estimated, in person  
and online)

**Faculty**

**600+ faculty**  
across ranks

**44 NSF**

**CAREER**

awards over the  
past four years

**7,300+ graduates**

across all degree levels in AY2023-24

**\$281M in awards**



# FSE in fall 2024

## Global connectivity

- PLuS Alliance; Cintana Alliance; TEDI London; capacity-building programs in Vietnam, Panama and Egypt; ITSI Fund partnerships

## Research and innovation

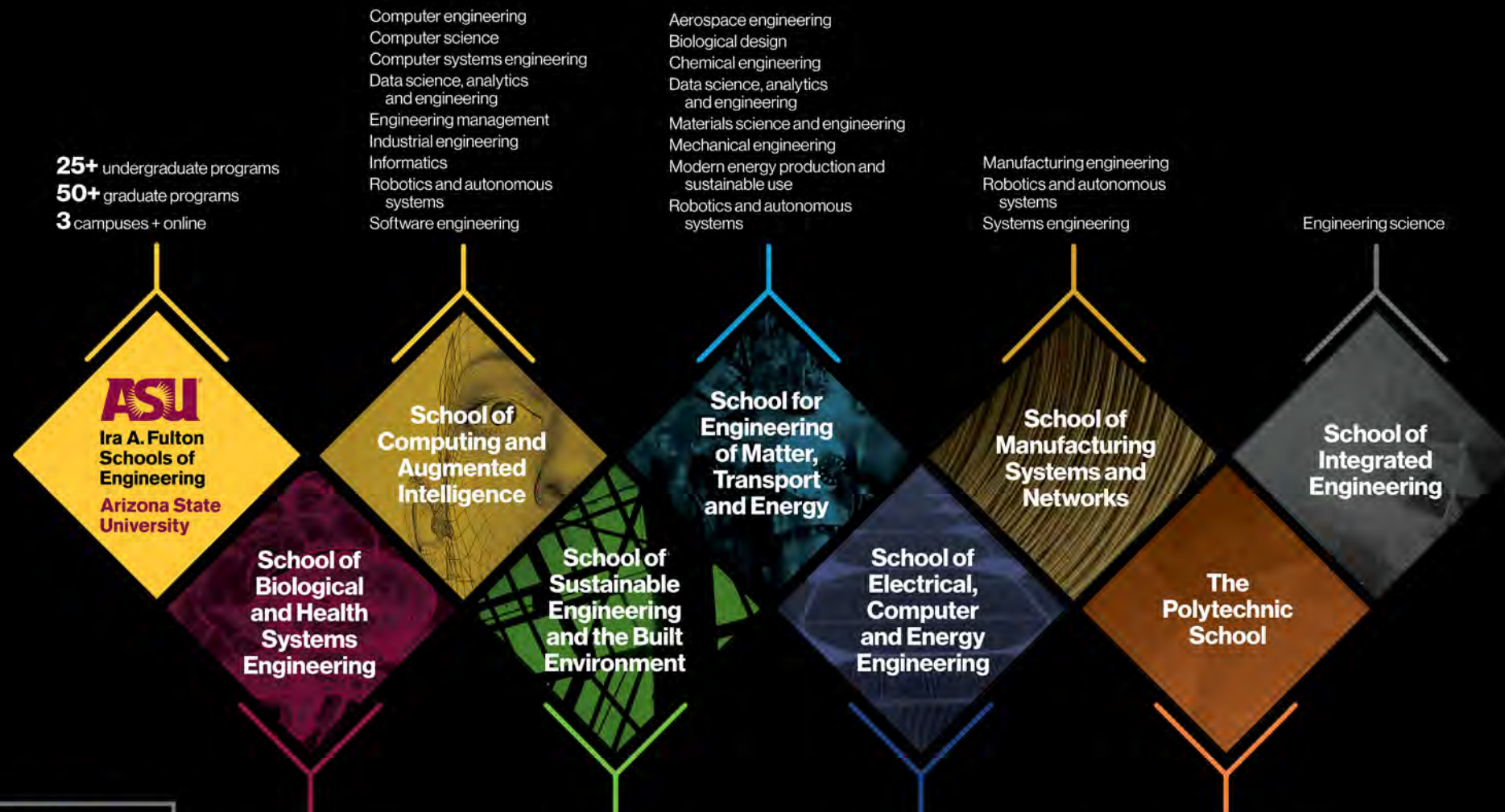
- Lead EPIXC, DoE's 7<sup>th</sup> Clean Energy Manufacturing Innovation Institute
- One of 8 hubs of the DoD Microelectronics Commons
- Leading research presence in ASU-led NSF Southwest Sustainability Innovation Engine
- Entrepreneurial outputs (national ranking per \$10M of research expenditures)



# Building engineers, inspiring innovators

## Our transdisciplinary partners at ASU

- College of Health Solutions
- College of Integrative Sciences and Arts
- Global Security Initiative
- Julie Ann Wrigley Global Futures Laboratory™
- School of Arts, Media and Engineering  
Herberger Institute for Design and the Arts
- School of Earth and Space Exploration  
The College of Liberal Arts and Sciences
- The Biodesign Institute
- W. P. Carey School of Business



25+ undergraduate programs  
50+ graduate programs  
3 campuses + online

Computer engineering  
Computer science  
Computer systems engineering  
Data science, analytics and engineering  
Engineering management  
Industrial engineering  
Informatics  
Robotics and autonomous systems  
Software engineering

Aerospace engineering  
Biological design  
Chemical engineering  
Data science, analytics and engineering  
Materials science and engineering  
Mechanical engineering  
Modern energy production and sustainable use  
Robotics and autonomous systems

Manufacturing engineering  
Robotics and autonomous systems  
Systems engineering

Engineering science

**ASU**  
Ira A. Fulton  
Schools of  
Engineering  
Arizona State  
University

School of  
Computing and  
Augmented  
Intelligence

School for  
Engineering  
of Matter,  
Transport  
and Energy

School of  
Manufacturing  
Systems and  
Networks

School of  
Integrated  
Engineering

School of  
Biological  
and Health  
Systems  
Engineering

School of  
Sustainable  
Engineering  
and the Built  
Environment

School of  
Electrical,  
Computer  
and Energy  
Engineering

The  
Polytechnic  
School

Biomedical engineering  
Robotics and  
autonomous systems

Civil engineering  
Civil, environmental and  
sustainable engineering  
Construction engineering  
Construction management  
Construction management  
and technology  
Data science, analytics and  
engineering  
Environmental engineering  
Sustainable engineering

Computer engineering  
Data science, analytics  
and engineering  
Electrical engineering  
Robotics and autonomous  
systems

Aeronautical management technology  
Clean energy systems  
Data science, analytics and engineering  
Engineering  
Engineering education systems and design  
Environmental and resource management  
Graphic information technology  
Human systems engineering  
Information technology  
Technological entrepreneurship and management  
Technology  
User experience

## Advancing engineering design on a global scale

**FSE Global Strategic  
Partnerships**

**CINTANA**  
EDUCATION

**TEDI** LONDON

**PLUS ALLIANCE**

**USAID**  
FROM THE AMERICAN PEOPLE

By collaborating with strategic partners, FSE maximizes its impact by expanding educational access and promoting sustainable development on a global scale.



# Teaching and Learning

- **Broaden access to innovative engineering education programs across campuses, online, and globally**
- **Improve student learning outcomes supported by technology-enhanced, active learning environments across all modalities**
- **Increase first-year student retention to 90 percent**
- **Increase the number of graduates to 10,000 per year**
- **Increase enrollment and retention of underrepresented groups to match Arizona's demographic diversity**

Becoming the most impactful university engineering enterprise in the United States



# Partnership

- Engage with community and industry partners to increase the pipeline of human capital in Arizona and beyond
- Increase alumni engagement
- Expand access to thousands of learners through industry-relevant, personalized learning pathways
- Support the launch of the School of Medicine and Advanced Medical Engineering and ASU Health
- Raise \$50M annually through philanthropic gifts to support faculty, students and programs

Becoming the most impactful university engineering enterprise in the United States



# Building engineers, inspiring innovators

**The Fulton Difference** – focus on student success via academic program excellence and extra-curricular engagement



## Engineers from Day One

Engage students in design/build within and outside of the classroom

- E2, eSpaces, student orgs, entrepreneurship, service-based learning and design, GCSP, UG research, projects and capstones



## Build community

Develop mindset, reinforce values

- Student ambassadors, peer mentors, comprehensive advising, student orgs, UGTAs, global opportunities, outreach, inclusive excellence



## Meet learners where they are

Support student success and equitable outcomes

- Residence halls, tutoring, career coaching, students orgs, Barrett Honors College, student center



# Big picture...

## Produce engineers and technologists

- Over 7,300 degrees granted in 2023–2024

## Retain students, continuously improve programs

- First-time, first-year student retention ~87% within ASU; has increased to nearly 80% within FSE

## Conduct impactful research

- Numerous faculty recognitions in 2023-2024; over \$280M in awards

## Grow our Ph.D. programs: ~1,300 PhD students

- Hallmark of successful promotion/tenure cases is mentorship of 4-5 PhD students

## Engage our community and stakeholders – donors, foundations, corporates

- ~\$46M in FSE last year





# **New Faculty Orientation**

**The Fulton Schools of Engineering**

**Direction vis-à-vis our goals**

**What we seek from our faculty –  
keys to success**

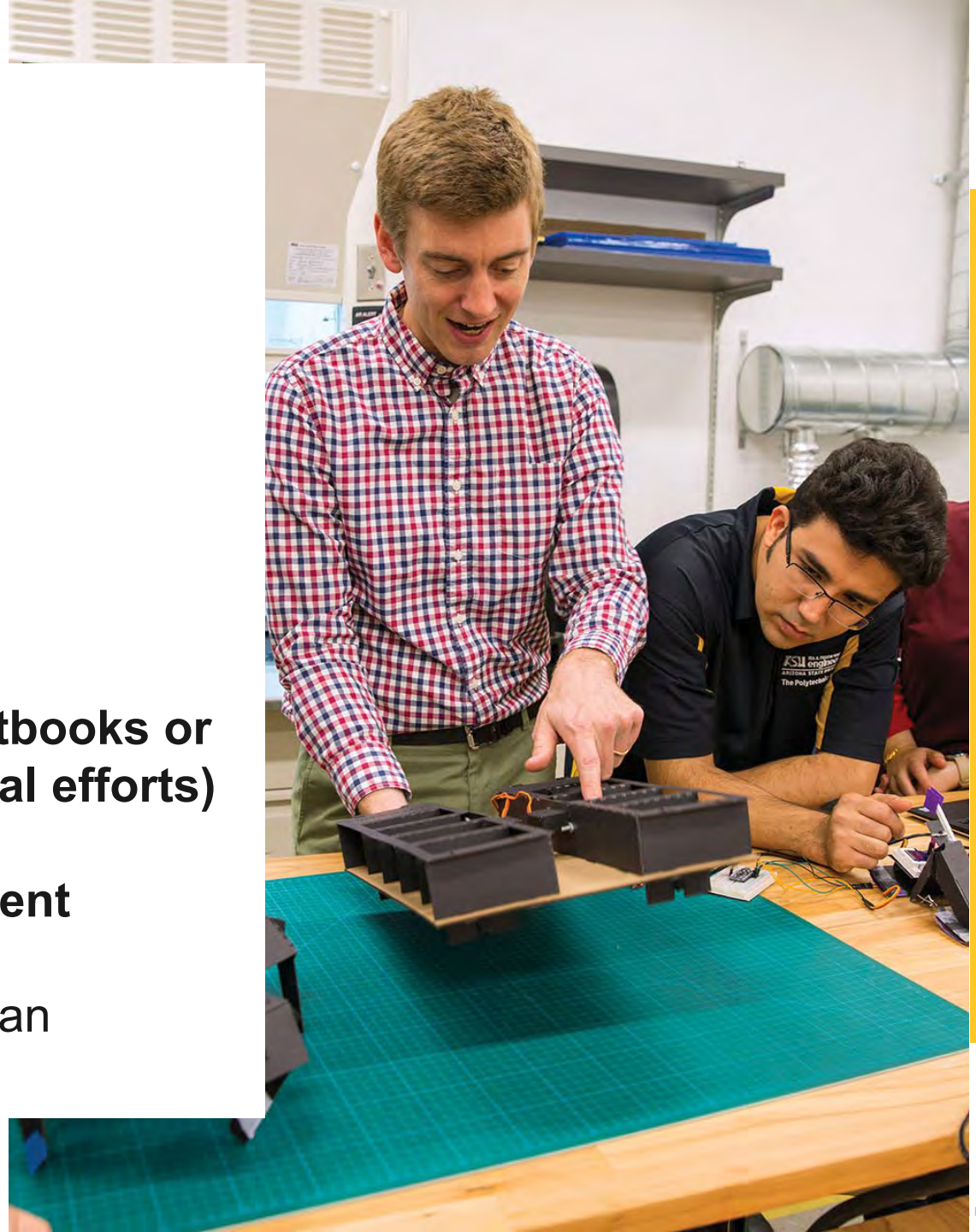
# Research activity that is visible, meaningful

- Research efforts should be visible and seen as important to the external community (**validation by your peers**)
- Transformational discoveries, innovations, and inventions (**validation by the community at large**)
- Outputs from research and entrepreneurial activities that are co-authored with graduate students (papers, presentations, patent applications, etc.)
  - **Work toward mentoring 4-5 doctoral students**
- Research funding enables all of these activities



# Teach well and continuously improve

- Student feedback
- Innovative materials and methods
- Recognition through teaching awards
- Produce relevant publications (i.e., textbooks or scholarly articles related to instructional efforts)
- Participation in professional development activities to improve as an instructor
  - The **Learning and Teaching Hub** is an excellent resource for all faculty





# Service

- **Be visible in your discipline-specific community**
- **Chair conference sessions, serve on technical committees, ...**
- **Make out-of-classroom contributions to academic program enhancement**
  - Participation on committees focused on curriculum reform, admissions, standards, ...
  - Participation in service opportunities in your school





# Recipe for success

## Think about...

- how students will describe you (in teaching, mentoring, various advising roles, ...)
- how your colleagues will describe you...
- how your peers outside of ASU will describe you.

**Develop an appreciation for what the President and Provost are trying to do (ASU Charter)**

**Ground your work to FSE values**

**Find ways to contribute to your program, school, and schools**

**ASU**® Ira A. Fulton Schools of  
**Engineering**  
Arizona State University

**[engineering.asu.edu](http://engineering.asu.edu)**





# Supporting your Success within the Fulton Schools

---

**Mentorship, the Fulton Schools Values, & Faculty Onboarding**

Jennifer M. Bekki  
Associate Dean of Inclusive Excellence  
August 20, 2024

# FSE grounds our inclusive excellence practices in recognition of the significance of individual, social and professional identities (and the intersections therein).

Have access to professional opportunities



.....

Feel included & belonged within FSE



.....

Are provided support & resources to realize full potential



# INCLUSIVE EXCELLENCE

*An inclusively excellent FSE is one in which all faculty and staff “have access to ... professional opportunities, feel included [and belonged], and have the resources [and support] to actualize their full potential” (pp. xxvi, NASEM, 2023)*



**Mentorship: a professional, working alliance in which individuals work together over time to support the personal and professional growth, development, and success of the relational partners through the provision of career and psychosocial support.\***

\*National Academies of Sciences, Engineering, and Medicine. 2019. *The Science of Effective Mentorship in STEMM*. Washington, DC: The National Academies Press. <https://doi.org/10.17226/25568>.



# Benefits of Mentorship



## **Advance Inclusive Excellence**

"Talent is equally distributed across all sociocultural groups; access and opportunity are not" [NAE Report, 2019]. Mentorship is one of many necessary ways to begin to address this broad, complex problem.



## **Improve wellbeing**

Effective mentorship supports positive mental health and improves career satisfaction. It also lessens the impact of institutional barriers.



## **Productivity**

Mentorship is linked to higher productivity and increases the likelihood of remaining on a chosen career path. E.g., for graduate students, effective mentorship from advisors lowers the time required complete degrees.

# MENTORSHIP 360 (M360) -- FACULTY MENTORING

As the formal faculty mentorship program in the Fulton Schools, the goal of M360 is to provide faculty in the Fulton Schools with career and psychosocial support that will positively impact their productivity, well-being and sense of belonging.

**Co-directed by Jennifer M. Bekki (jennifer.bekki@asu.edu) and Samantha Brunhaver (samantha.brunhaver@asu.edu),** with M360 Faculty Fellows in each school / unit, who coordinate mentoring programs contextualized within the culture of each school.

**M360 Website: <https://tinyurl.com/M360ASU>**





# MENTORSHIP 360 (M360) WORKSHOPS & PANELS

M360 -- at the Fulton Schools level -- also coordinates workshops focused on topics that relate to mentoring and / or topics that have been expressed as widely of interest based on input from M360 Faculty Fellows. The following are the M360 Workshops and panels planned for 2024 - 2025 AY.

## **Workshop: Mentoring Tools**

Learn about and practice using evidence-based tools to support effective mentorship.

- **Thursday, September 12, 2024, 2:00pm - 4:00pm, CAVC 301**
- **Wednesday, September 25, 2024, 9:00am - 11:00am, CAVC 401**

## **Panel: Lab Setup and Management**

- November, 2024 time and location TBD

## **Workshop: Supporting Student Mental Health**

- February, 2025, time and location TBD

## **Panel: Supporting Faculty in Caregiver Roles**

- April, 2025, time and location TBD



# Your Onboarding Plan

**Includes the expectation that you'll engage with each of these elements during your first academic year. There are differentiated expectations for tenured / tenure track faculty and teaching track faculty**

- **WELCOME / ORIENTATION EVENTS**

---
- **FULTON SCHOOLS VALUES-DRIVEN PROFESSIONAL DEVELOPMENT**

---
- **COMMUNITY BUILDING AND MENTORING**

---
- **SCHOOL / UNIT LEVEL ONBOARDING**

---
- **ONBOARDING RESOURCES**



# The Fulton Schools Values

We are working to embed the FSE Values in all aspects of our culture, including faculty onboarding!

## **Cultivate Excellence**

Contribute to a culture and environment that supports healthy growth in yourself and others; create positive impact through high quality contributions to the Fulton Schools, ASU, and beyond.

## **Deliver Innovation that Matters**

Produce solutions that demonstrably create a greater value or overcome an existing challenge.

## **Encourage Bold Thinking**

Contribute to a culture and environment that supports risk taking (i.e., doing something when you aren't sure what the outcome will be) and acknowledges it as part of the process of delivering innovation that matters.

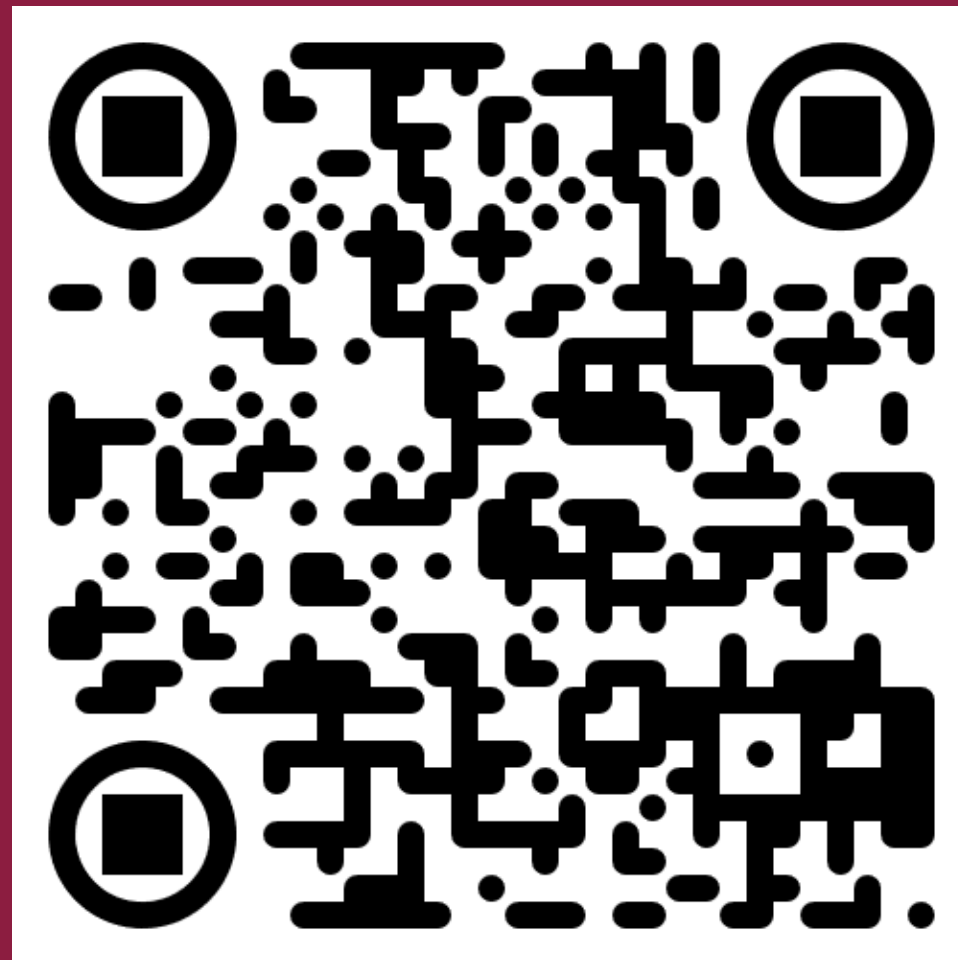
## **Foster a Community of Learning and Collaboration**

Cultivate an environment where individuals come together to share knowledge, enhance skills, and leverage resources for mutual growth and development.

## **Build a Foundation for All to be Successful**

Foster a culture and environment in which all members of the Fulton Schools community have access to educational and professional opportunities, feel included and belonged, and have the support they need to achieve their full potential.

# Self-enroll in the Fulton Schools Values Training Course here:



[https://tinyurl.com/FSEValues  
TrainingCourse](https://tinyurl.com/FSEValuesTrainingCourse)

# UPCOMING FACULTY ONBOARDING EVENTS

## **Cohort of Recently-hired Educators (CORE) Kickoff**

**Option 1: 8/16, 8:30am - 1:30pm (lunch provided)**

**Option 2: 8/20, 1:30pm - 4:30pm**

Get set up for success in the classroom during the first several weeks of the semester. Expected for all new faculty who are teaching this fall and are hired as an Assistant Professor or as teaching faculty.

## **Faculty Welcome**

**9/5, 4:00pm-5:30pm followed by M360 reception, 5:30 - 6:30**

Learn more about onboarding program and expectations. Connect with New Faculty Advisory Council (NFAC) onboarding mentors.

Attendance expected for all new faculty.



# Got questions



**JENNIFER  
BEKKI**

Associate Dean of Inclusive Excellence,  
the Fulton Schools

[jennifer.bekki@asu.edu](mailto:jennifer.bekki@asu.edu)

**Feel free to contact me!**

# Welcome!!

We are excited for you  
to join us in the  
Fulton Schools!!!



**ASU** Ira A. Fulton Schools of  
**Engineering**  
Arizona State University  
**[engineering.asu.edu](http://engineering.asu.edu)**



# FSE Learning and Teaching Hub

New Faculty Orientation | 20 August 2024



# FSE Learning and Teaching Hub North Star (updated)

## Vision

All FSE students thrive in an environment that fosters learning.

## Mission

Collaborate with faculty and staff to improve student outcomes, retention, access, and inclusivity across all FSE programs.

## Goals

Facilitate a culture of teaching and learning within FSE

Ensure FSE learning experiences are relevant, engaging, and designed for student success

Create new opportunities for a diverse set of learners to experience FSE education

Establish systems, process, protocols and resources that ensure operational excellence and promote employee well-being





# Meet the LTH Team

## Operations



## Classroom Technology



## Professional Learning and Scholarship



## Data and Systems



## Learning Design and Technology



## Media Team





## Professional Learning

- Workshops
- Reference Guides
- Self-paced Trainings



## Learning Design

- Guided Course Development
- Media Production
- Curriculum Mapping



## Instructional Consultation

- Instructional Strategies
- Educational Research
- Technical Assistance



## Learning Analytics

- Course Outcomes
- Learner Behavior
- Program Success Data



## Educational Technology

- Technology Identification
- Canvas Integration
- 3rd party tools



## Quality Assurance

- Classroom Observations
- Pre-Semester Course Review
- Post Evaluation



# Professional Learning



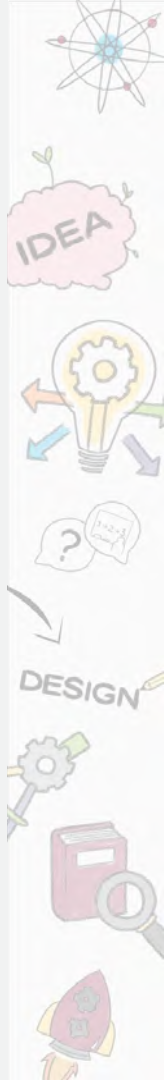
# Professional Learning Portfolio



Research-based Instructional  
Strategies in Engineering

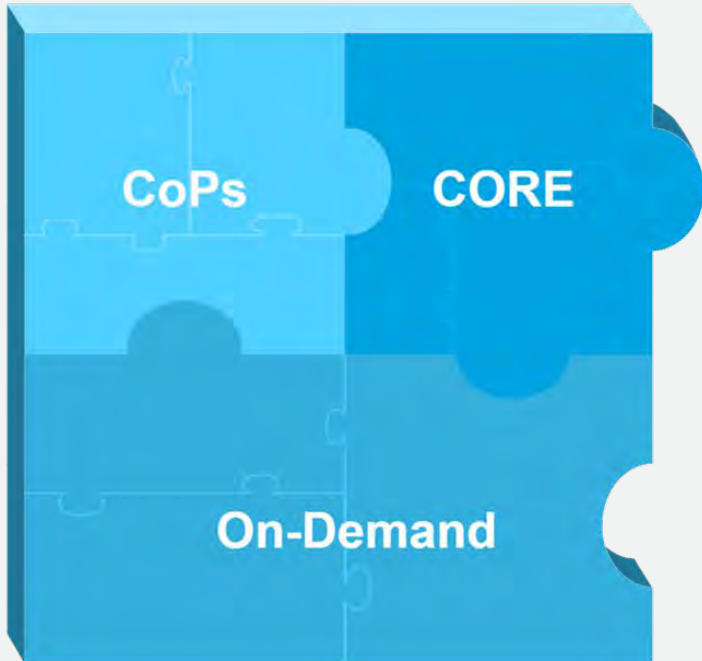


Educator Networking Group  
and Gatherings in Engineering





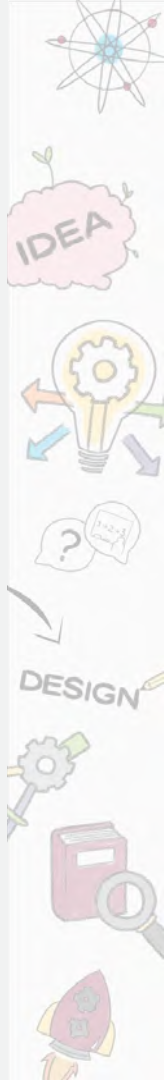
# Professional Learning Portfolio



**RISE**



**ENGaGE**



# Cohort of Recently-hired Educators (CORE)



## CORE

A workshop series designed to offer actionable instructional ideas specific to teaching and learning in engineering courses. Multiple monthly options.

Reach out to [Stefani Jenkins](#) if you would like to join this year's cohort.



# CORE Objectives

- LO1: Acquire foundational knowledge about engineering education topics and methods
- LO2: Recognize differences between instructor-centered and student-centered classroom practices
- LO3: Differentiate between formative and summative feedback
- LO4: Recognize factors/common challenges that impact student learning and strategies to address them
- LO5: Acquire knowledge about and implement start of the semester



# CORE Series

**August:** Get Ready! Preparing for the semester Start

**September:** Structuring Engaging Sessions

**October:** Effective Assessment in Engineering Education

**November:** Student Motivation

**January:** Collaborative & Cooperative Learning

**February:** Embracing and Integrating the Entrepreneurial Mindset

**March:** Reflecting on Progress: Instructional Innovation

**April:** SEEdS-Celebrating Learning



# Other upcoming opportunities

## SEEdS

Fridays | 12pm-1pm MST | via Zoom

**9/20/2024 Saurav Kumar**  
*Does Adaptive Teaching Improve Flipped Learning*

**10/18/2024 Andrew Maynard**  
*Generative AI in Teaching and Learning*

**11/15/2024 Mays Imad**  
*Reparative Humanism and Agreements in STEM*

## Communities of Practice (CoPs) and workshops

- Generative AI in Teaching and Learning
- Assessments in Large Scale Courses
- Innovating Teaching in First-Year Project-Based Courses
- LTH Book Study
- ICAP
- CORE

## On-demand

### Quick-Reference Guides

Interactive Resources:  
Teaching at Fulton: Nuts and Bolts

*Coming soon!*

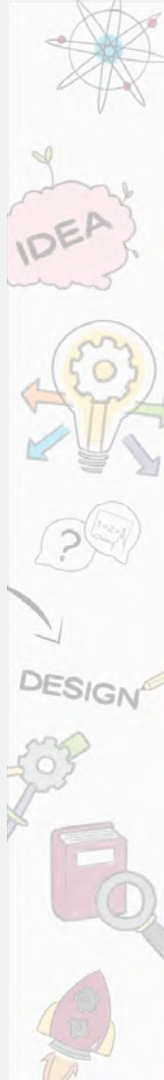
Flipped Learning  
Learning Communities  
Active Learning Strategies



Connect with us!

**fse-lthub@asu.edu**

**[lth.engineering.asu.edu](http://lth.engineering.asu.edu)**







# Fulton Schools New Faculty Orientation

## Building the FSE Narrative



**“I strongly believe you  
cannot have a great city  
without a great school of  
engineering.”**

**Ira A. Fulton**

# It's all about building relationships

- We build partnerships and relationships, uniting ideas, people, philanthropic and research-related support and investments to advance ASU's goals for inclusion, student success, discovery and local and global impact.
- Individuals / Non-Profits / Corporations
- Long term relationships - Everyone has a role!
  - You'll hear from us about engaging donors, tours, industry meetings etc.

# Fulton Engineering Team



**David Wahls**  
Executive Director of Development

[David.Wahls@asufoundation.org](mailto:David.Wahls@asufoundation.org)  
480-727-0827

Contact me to support

- Initiatives led by Dean Kyle Squires
- [School of Sustainable Engineering and the Built Environment](#)



**Kati Martinez**  
Director of Development

[Kati.Martinez@asufoundation.org](mailto:Kati.Martinez@asufoundation.org)  
480-727-4609

Contact me to support

- [School of Biological and Health Systems Engineering](#)
- [School for Engineering of Matter, Transport and Energy](#)



**Kim Taylor**  
Director of Development

[kim.taylor@asufoundation.org](mailto:kim.taylor@asufoundation.org)  
202-607-7987

Contact me to support

- [School of Electrical, Computer and Energy Engineering](#)



**Jennifer Williams**  
Assistant Director of Development

[Jennifer.Williams@asufoundation.org](mailto:Jennifer.Williams@asufoundation.org)  
480-727-1688

Contact me to support

- [School of Manufacturing Systems and Networks](#)
- [The Polytechnic School](#)
- [Fulton Student Organizations](#)



**Sevde Haner**  
Development Officer

[Sevde.Haner@asufoundation.org](mailto:Sevde.Haner@asufoundation.org)  
602-543-6622.

Contact me to support

- [School for Engineering of Matter, Transport and Energy](#)



**Liz Dover**  
Development Officer

[elizabeth.dover@asufoundation.org](mailto:elizabeth.dover@asufoundation.org)  
602-543-5167

Contact me to support

- [School of Sustainable Engineering and the Built Environment](#)



**Julie Werner**  
Stewardship Development Coordinator

[julie.werner@asu.edu](mailto:julie.werner@asu.edu)  
480-884-0083



**Jenny Hemsley**  
Administrative Specialist

[jenny.hemsley@asu.edu](mailto:jenny.hemsley@asu.edu)  
480-496-1721



**Bob Olson**  
Director, Business Engagement Catalyst



**Dario Solis, Ph.D.**  
Business Development Director  
Innovation Technology Partnerships

[dario\\_solis@asu.edu](mailto:dario_solis@asu.edu)  
Cell: 806-201-3022



**Anthony Tam**  
Project Manager  
Business Engagement Catalyst

[anthony.tam@asu.edu](mailto:anthony.tam@asu.edu)  
602-543-2633



**John Lewis**

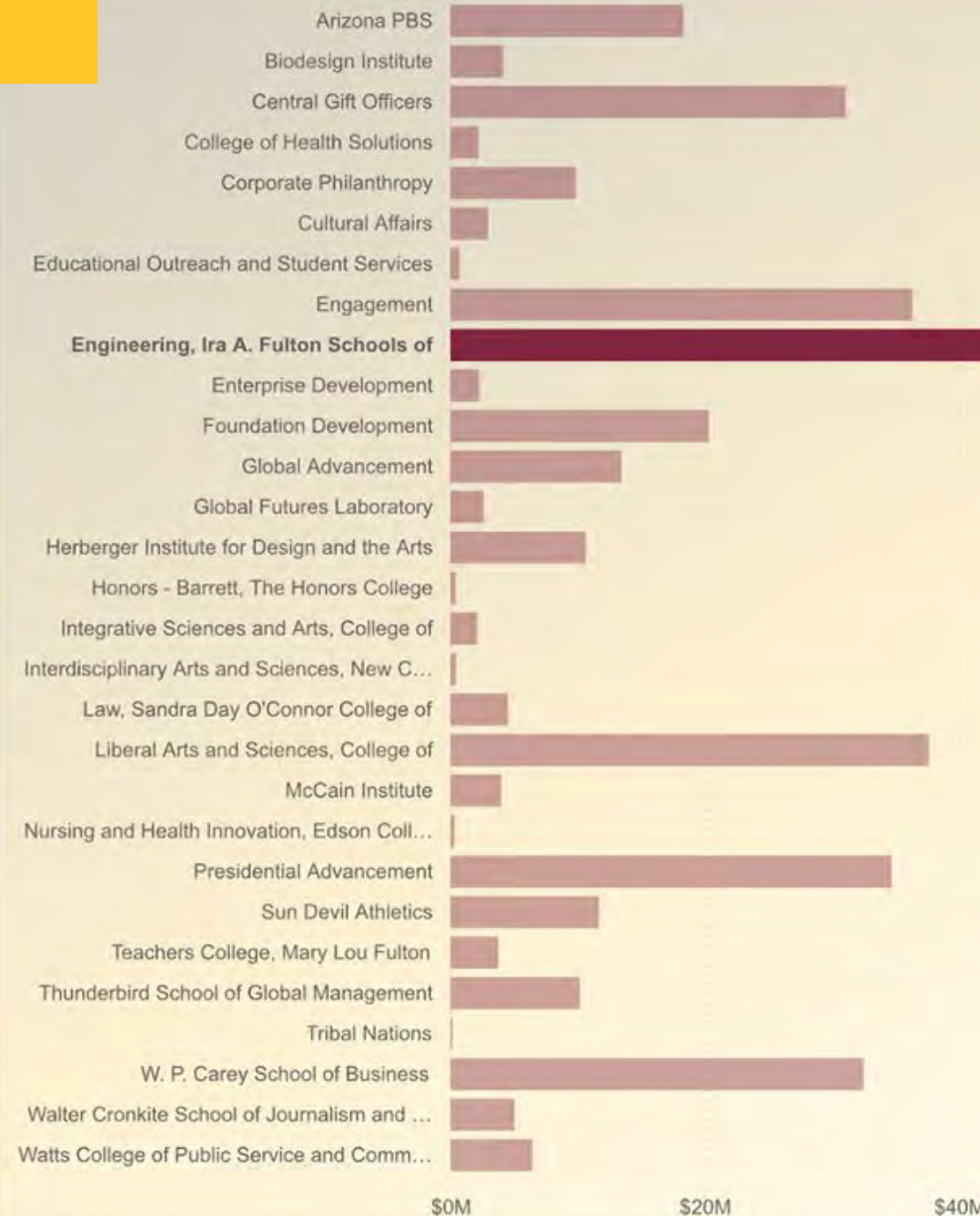
**John Lewis**  
Director, Capstone Engagement,



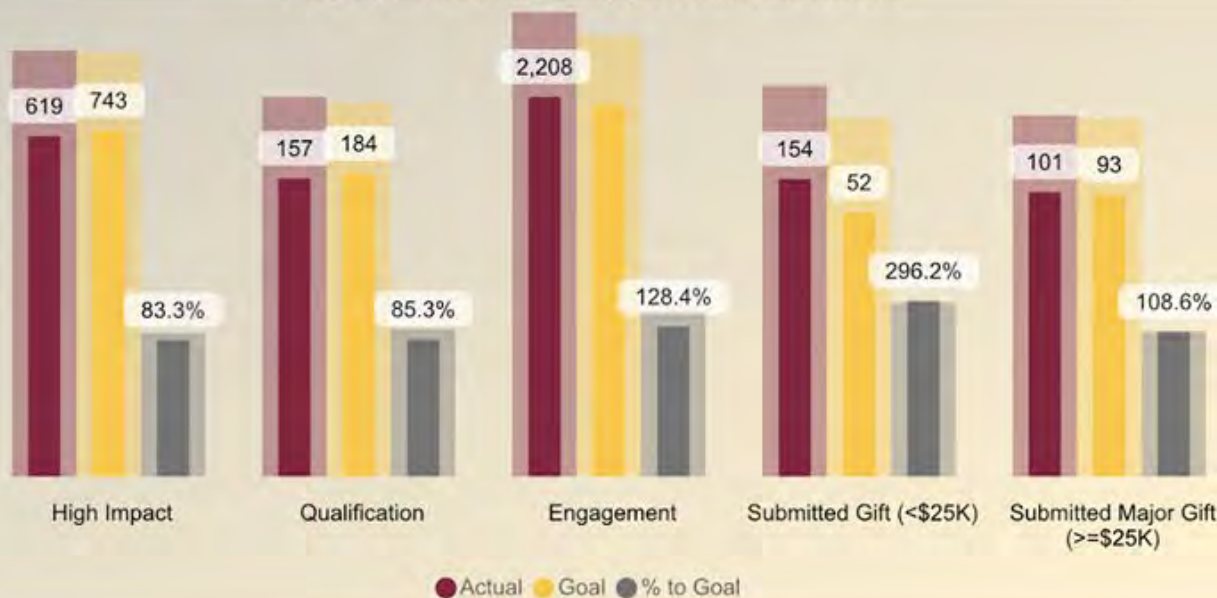
**Tony Libera**  
Associate Director eProjects,



# FSE Fundraising – FY24



## Engagement and Opportunity Metrics



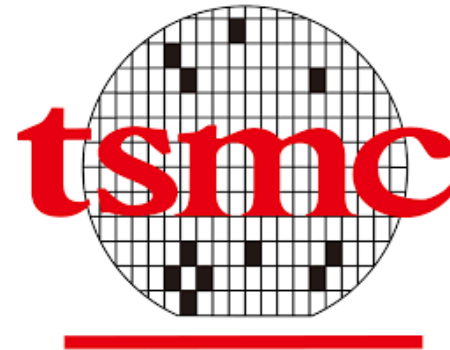


# Industry and Philanthropic highlights

- ~\$47M - Annual FSE philanthropic support
- ~\$25M - Industry relationship engagement highlights



# Honeywell



# CAVC is now the Paul C. Helmick Center



*For over 60 years, Paul was a recognized business leader in the mining and equipment industries sharing his wealth of knowledge, business experience and friendship with customers and colleagues. Valuing the importance of education he gave generously to schools and high school literacy programs.*



## 4 pillars:

- **Student Success**
- **Faculty Excellence**
- **Industry Integration**
- **Infrastructure**



# Align corporate engagement

**Coordinate with Business Engagement Catalyst, Knowledge Enterprise Corporate Engagement and Strategic Partnerships teams around comprehensive corporate engagement**

- Create comprehensive partnerships that include philanthropic components including, GIK, scholarship, and faculty investment.
- Engage during relationship building through contract negotiation to ensure funding can be counted with ASUF and KE
- Align research funding opportunities and gaps to help build out needs for research centers, through naming/branding budgets with corporate investments
- Tap into multiple budgets within companies that allow for philanthropic, marketing, research, training and asset transition

## **ASU Advanced Manufacturing Center of Excellence – FANUC/Rockwell Automation**

**Invested** – \$1.4M Gift-in-Kind of equipment from FANUC/Rockwell; \$250K partner investment from Honeywell

**Next** – Professorship, scholarships and fellowships, center naming



# Use Case: Microelectronics



ASU, Applied Materials to create Materials-to-Fab Center at ASU Research Park

## Invested:

### Applied Materials

- \$200M in semiconductor equipment
- \$4.8M annually in research or philanthropic funding
- \$1.4M endowed scholarship fund

## Next:

- Workforce development programs
- Named faculty, fellowships and scholarships
- Named facility, centers and spaces



## Invested:

### Gary and Diane Tooker

- \$1.25M discretionary fund to advance STEM degrees



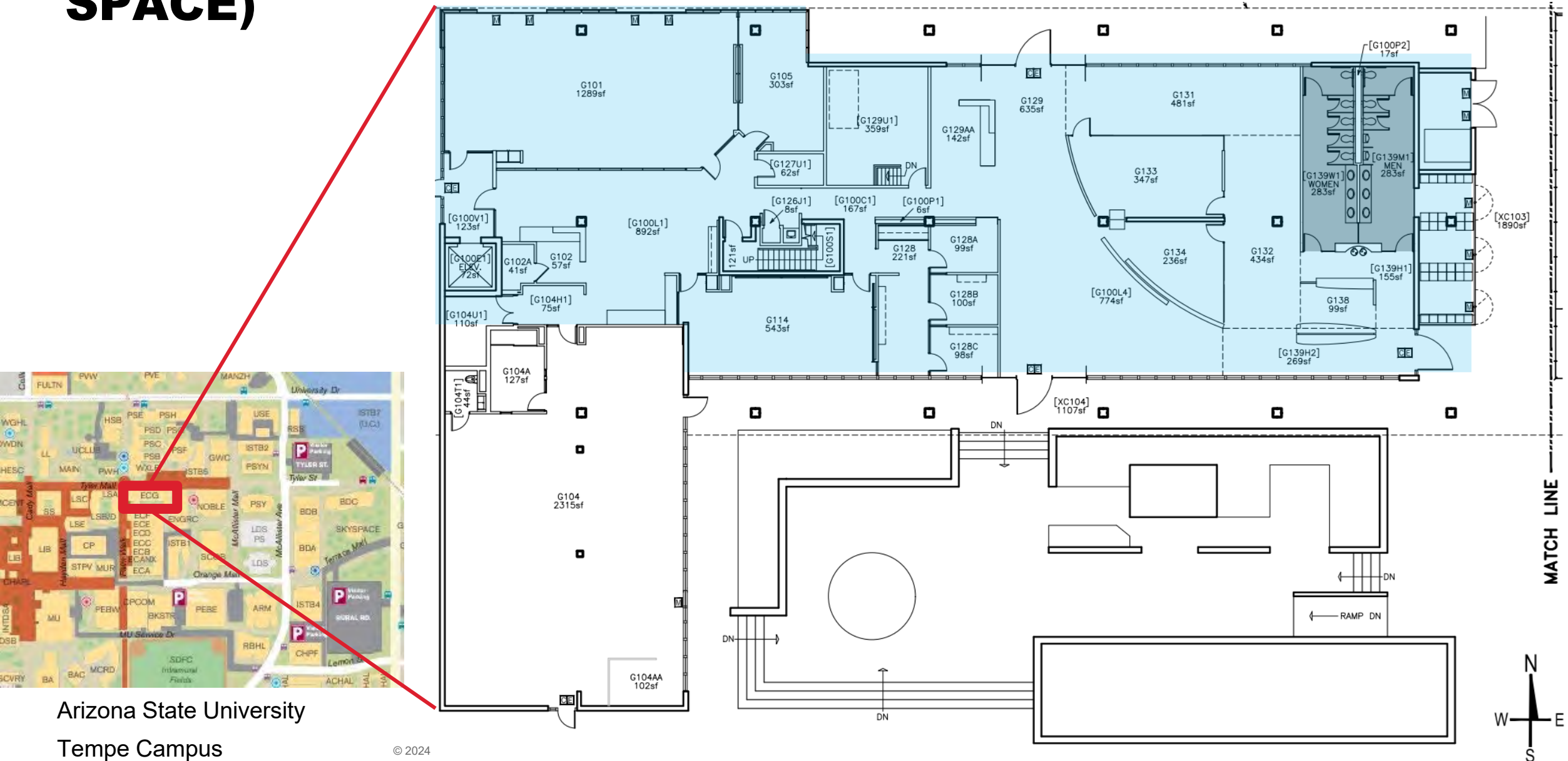
# Honeywell-ASU Innovation Hub

## Project Planning





# ECG (BLUE INDICATES HONEYWELL BRANDED SPACE)



Arizona State University  
Tempe Campus



**Changing**  
**Futures**  
For Arizona. For the world.

ASU Capital Campaign –  
Building the FSE Narrative

# Measures of Progress

By the Numbers:



**\$600M**

ASUF annual steady-state New  
Gifts & Commitments



**\$1B**

Research Expenditures



**\$2B**

Endowment



**100M**

Learners

**...among many other measures of progress**





# Campaign overview:

## Changing Futures

*For Arizona. For the world.*

As humanity faces the most complicated issues in recorded history, we cannot be bystanders. Arizona State University is **uniquely committed** to make a difference. We must go where we're needed and do what we can. We must **connect people** across the world. We must **ask better questions** and find smarter answers. We must be willing to **take initiative**, **act boldly** and **leave our mark**. In this mission, we need partners like you.

This campaign is **inclusive at its core**, a public celebration and commitment to ASU's Charter. Anyone who raises their hand to help create a better future will be counted. Through service, connecting, learning, as well as giving, ASU will capture all actions taken in the name of **Changing Futures for Arizona and the world**.

# Campaign pillar descriptions

## Transform global education

We believe in creating a world where **no one is excluded** from the **benefits of education**. We are uniquely positioned to fundamentally **change how education is delivered** in this century and beyond.

## Build the future of health

We believe in creating a future where **every person has confidence in their health and well-being**. All of society must have **equitable access** to healthcare that promotes longevity and a **high quality of life**.

## Reshape our relationship with the planet

We believe that we can and must make a **meaningful contribution to ensuring a habitable planet** and a future in which **well-being is attainable for all humankind**.

## Inspire tomorrow's game changers

We believe the **solutions** to problems yet discovered will **require dreamers, visionaries and revolutionary leaders**.

## Empower community resilience

We believe we have a **responsibility** to make our **communities better, stronger and healthier**.

## Advance technology for good

We believe that great **technological strides** can and must be leveraged for a more **equitable future for all humanity**.

# Campaign Timeline

Quiet Phase

Public Phase

Celebration!

Now – Dec 2024

Jan 2025 – Dec 2027

Spring 2028

Design  
Build  
Execute \$\$\$

Execute \$\$\$

Execute \$\$\$

# We want to help you!

## Leveraging the upcoming campaign...

1 – How can we help you build connections with industry partners, alumni and donors so they can engage and support your work?

2 – How can we help each of you create a pathway to a named faculty role or discretionary funding for your program?

*(Annual Named Professorships - \$150K, Endowed Professorships \$1M)*

3 – How can we help you think through big ideas and areas for funding opportunities with donors and industry partners?



# Next steps

- Engage with Development and BEC team members around ecosystems of investors (internal – faculty and staff leaders, external - individuals/industry/foundations/government)
- Identify lead partners to support and amplify messaging – engage them as first movers
- Start having great conversations!

# Fulton Engineering Team



**David Wahls**  
Executive Director of Development

[David.Wahls@asufoundation.org](mailto:David.Wahls@asufoundation.org)  
480-727-0827

Contact me to support

- Initiatives led by Dean Kyle Squires
- [School of Sustainable Engineering and the Built Environment](#)



**Kati Martinez**  
Director of Development

[Kati.Martinez@asufoundation.org](mailto:Kati.Martinez@asufoundation.org)  
480-727-4609

Contact me to support

- [School of Biological and Health Systems Engineering](#)
- [School for Engineering of Matter, Transport and Energy](#)



**Kim Taylor**  
Director of Development

[kim.taylor@asufoundation.org](mailto:kim.taylor@asufoundation.org)  
202-607-7987

Contact me to support

- [School of Electrical, Computer and Energy Engineering](#)



**Jennifer Williams**  
Assistant Director of Development

[Jennifer.Williams@asufoundation.org](mailto:Jennifer.Williams@asufoundation.org)  
480-727-1688

Contact me to support

- [School of Manufacturing Systems and Networks](#)
- [The Polytechnic School](#)
- [Fulton Student Organizations](#)



**Sevde Haner**  
Development Officer

[Sevde.Haner@asufoundation.org](mailto:Sevde.Haner@asufoundation.org)  
602-543-6622.

Contact me to support

- [School for Engineering of Matter, Transport and Energy](#)



**Liz Dover**  
Development Officer

[elizabeth.dover@asufoundation.org](mailto:elizabeth.dover@asufoundation.org)  
602-543-5167

Contact me to support

- [School of Sustainable Engineering and the Built Environment](#)



**Julie Werner**  
Stewardship Development Coordinator

[julie.werner@asu.edu](mailto:julie.werner@asu.edu)  
480-884-0083



**Jenny Hemsley**  
Administrative Specialist

[jenny.hemsley@asu.edu](mailto:jenny.hemsley@asu.edu)  
480-496-1721



**Bob Olson**  
Director, Business Engagement Catalyst



**Dario Solis, Ph.D.**  
Business Development Director  
Innovation Technology Partnerships

[dario\\_solis@asu.edu](mailto:dario_solis@asu.edu)  
Cell: 806-201-3022



**Anthony Tam**  
Project Manager  
Business Engagement Catalyst

[anthony.tam@asu.edu](mailto:anthony.tam@asu.edu)  
602-543-2633



**John Lewis**

**John Lewis**  
Director, Capstone Engagement,



**Tony Libera**  
Associate Director eProjects,

**Thank you!**



# Supporting Your Research Success

Office of Research, Innovation and Entrepreneurship (ORIEN)  
Ira A. Fulton Schools of Engineering





A person wearing safety glasses and gloves is working in a laboratory setting. They are using a microscope to examine a component on a breadboard. The scene is dimly lit with colorful ambient lighting. A text overlay is present in the upper right corner.

## **ORIEN's mission**

Make ASU the best place to do engineering research—  
and to achieve impact through  
that research

# ORIEN Philosophy

Value creation at the university happens with the faculty. The role of ORIEN is to (i) remove barriers that inhibit faculty from creating more (research) value and (ii) provide supporting services to help capture the value that is created (through, e.g., the three P's: papers, patents, and people)



# The three functions of ORIEN



## Proposal development

Pre-award across the Schools  
Council of Research Directors  
New large opportunity creation  
Graphics/slides/write-ups



## Research operations

Post-award across the Schools  
Facilities/space/equipment  
Research talent  
Purchasing/shipping  
Cost share



## Impact and entrepreneurship

Faculty entrepreneurship  
Research commercialization  
Strategic communications





*MTW enabled SWAP Hub and the AMAT and NXP partnerships, and will enable additional CHIPS awards*

## Build Differentiated Capabilities

Good research is done with good tools. And unique research often requires unique tools.

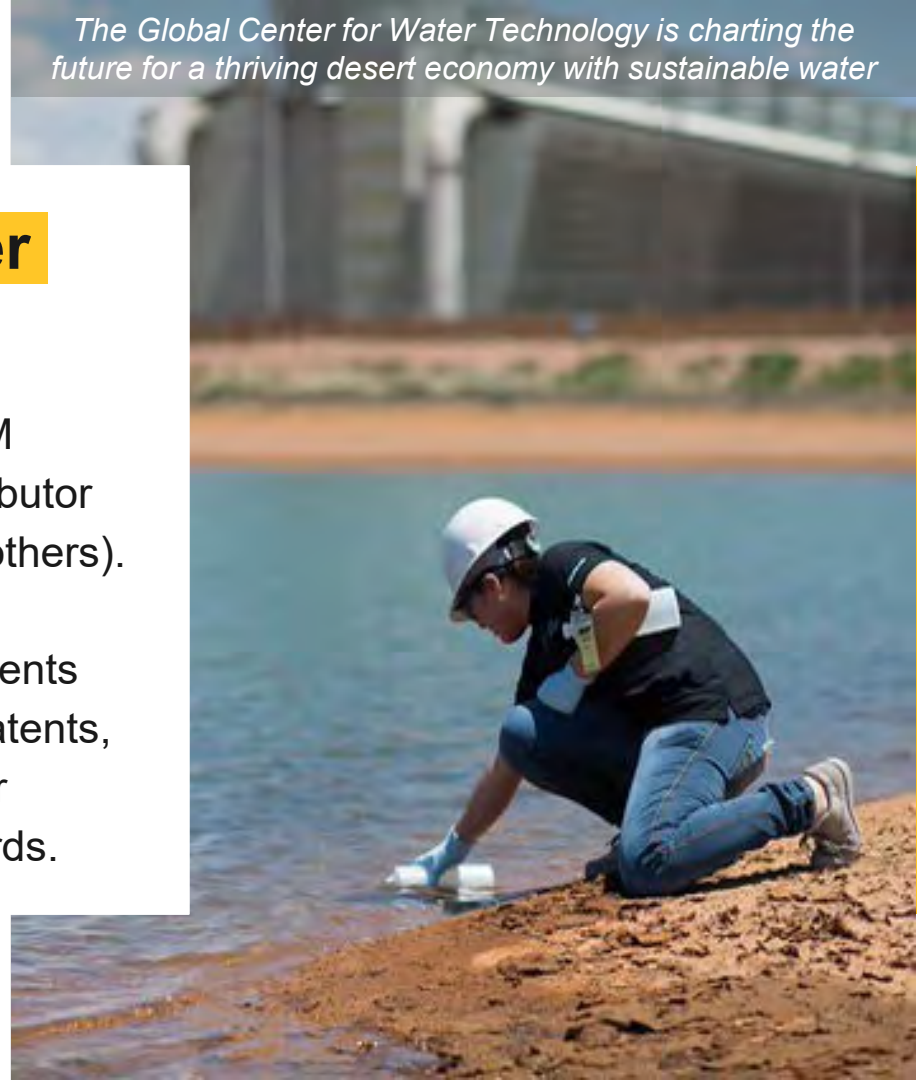
When we build capabilities (facilities, equipment, software, databases, know-how) that no one else has, we are competitive when no one else is.



## Show We Can Deliver Big with Big Money

In 2023, ASU won several >\$50M projects with FSE as a key contributor (SWAP Hub, EPIXC, AWII, and others).

We are converting these investments into value and impact (papers, patents, and people) that demonstrate our capacity to lead even larger awards.

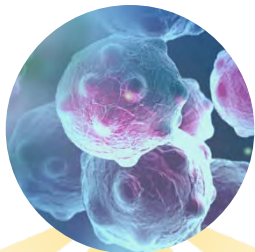


# Lean Into Our Competitive Advantages

3

FSE Research  
Impact Themes

Technology-Enhanced  
Health and Medicine



Competitive Manufacturing in  
an Advanced Economy



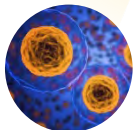
Climate Technology  
Solutions



National and Economic  
Security



Engineered  
Embodiments



Imaging



Cell and tissue  
engineering



Biosensors



Data



Additive  
manufacturing



Automation



Water



Solar and  
storage



Grid



Comms



Microelectronics



AI

# 4

## Hire (and Retain), and Make Every Hire Above Average

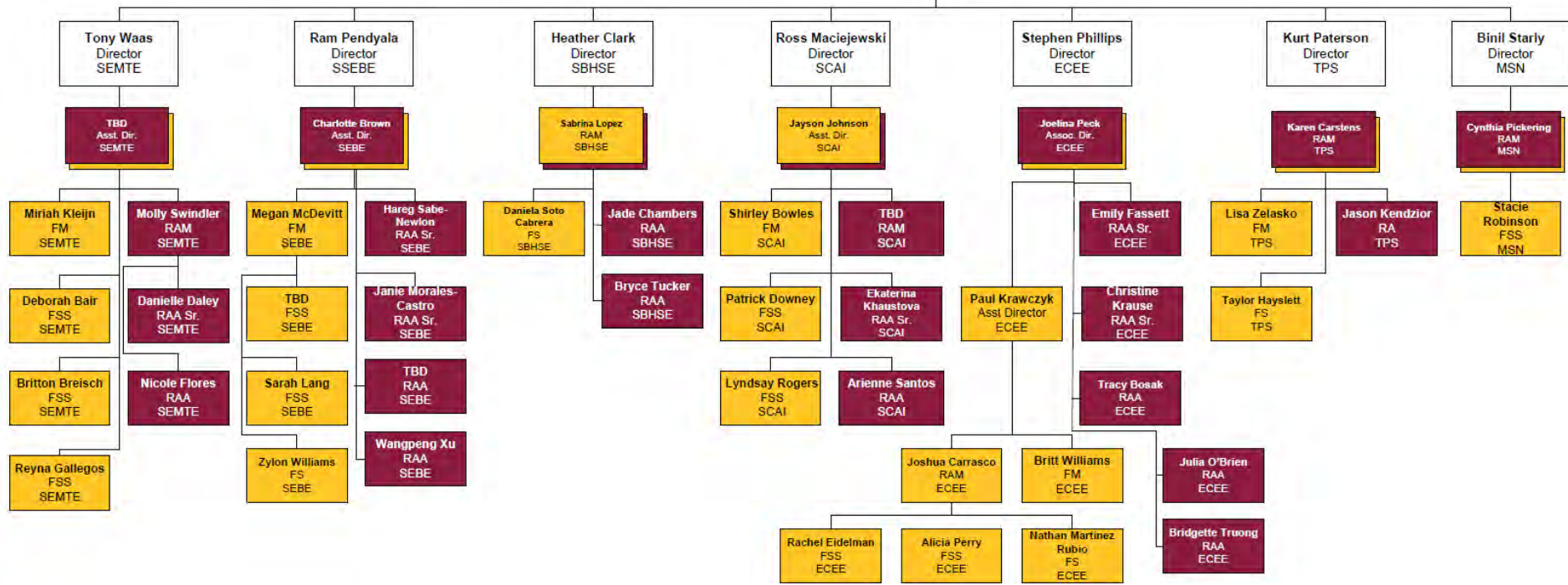
You can't do epic stuff without epic people.

We need the best, and we need lots of them. And student, postdoc, and research faculty recruitment is as important as T/TT faculty recruitment.



*FSE NSF CAREER awardees*

# Getting started: Meet your RA(s)





# Getting started: Meet your Research Director

*Paulo Shakarian, SCAI*



*Sarah Stabenfeldt, SBHSE*



*Seth Ariel Tongay, SEMTE*



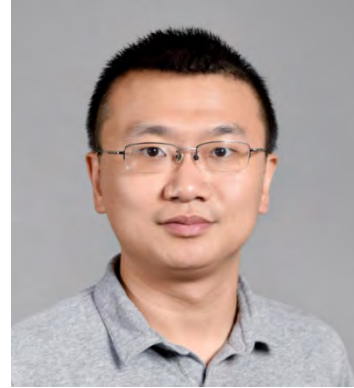
*Anca Delgado, SSEBE*



*Umberto Celano, ECEE*



*Wenlong Zhang, MSN*



# Getting started: Facilities

## Your lab



## Core Facilities



Knowledge Enterprise  
Core Facilities

[Home](#) [Instrument Design & Fabrication](#) [Computing & Data Services](#) [Nanofabrication](#) [Materials](#) [Biosciences](#) [Clinical Research Services](#)



### ASU Core Research Facilities

Superior service. State-of-the-art equipment.  
Specialized solutions.

# Getting started: Spend your startup (now!)

- You can't have research impact until you spend your startup, and it's hard to get proposals funded until you've demonstrated research impact
- Spend your startup within two years, and don't feel like you have to get everything right





# Getting started: Find grant opportunities

The screenshot shows an email client interface with a search bar at the top. The email is titled "Research Advancement Newsletter - VFS: Autonomous VTOL Technical Meeting CFP" and is from ASU Engineering to Zachary Holman. The newsletter content includes the ASU Engineering logo, the title "Research Advancement Newsletter", and the text "ORIEN: Office of Research, Innovation and Entrepreneurship". A circular logo for "ASU RESEARCH ADVANCEMENT TEAMS" is also visible, with the tagline "MAKING RESEARCH WORK". The bottom of the newsletter features a photograph of a young man looking at a screen displaying code.

Research Advancement Newsletter - VFS: Autonomous VTOL Technical Meeting CFP

ASU Engineering <engineering@reply.asu.edu>  
To: Zachary Holman

Follow up. Completed on Friday, August 16, 2024.  
If there are problems with how this message is displayed, click here to view it in a web browser.

**ASU** Ira A. Fulton Schools of Engineering  
Arizona State University

**Research Advancement Newsletter**

ORIEN: Office of Research, Innovation and Entrepreneurship

ASU RESEARCH ADVANCEMENT TEAMS  
MAKING RESEARCH WORK

Log out



# Getting started: Submit proposals

Electronic intake form, <https://proposals.research.asu.edu>

## 1. Sign in with your ASURite:



ASU ARIZONA STATE UNIVERSITY

ASU LiveSafe mobile app  
Connect with ASU PD:  
chat | pictures | audio | video

Download free at  
Apple iTunes store  
Google Play  
livesafe.asu.edu

### Sign In

ASURITE User ID:  [Activate or Request an ID](#)

Password:  [Forgot ID / Password?](#)

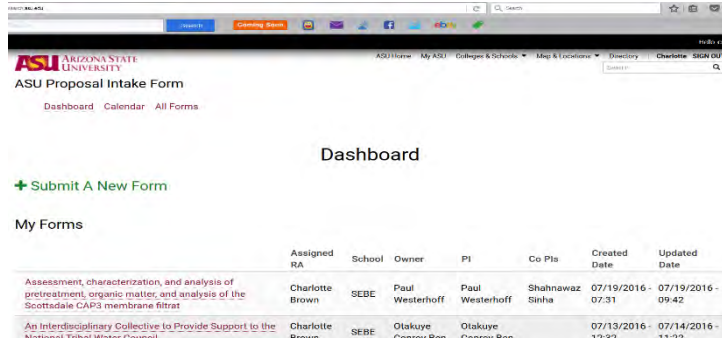
Remember My User ID

Need Help? Visit the [Help Center](#) or call 1-855-ASU-5080 (1-855-275-5080)

[System Status](#) | [ASU Home](#) | [Copyright](#) | [Acceptable Use](#) | [Privacy](#)



## 2. Select Submit a New Form:



ASU ARIZONA STATE UNIVERSITY

ASU Proposal Intake Form

Dashboard | Calendar | All Forms

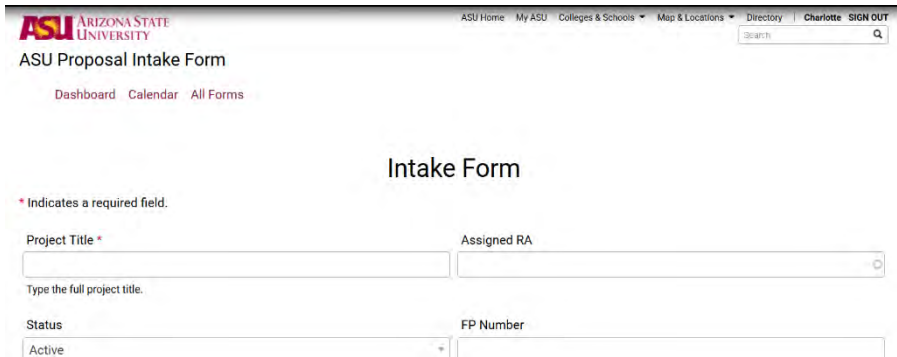
### Dashboard

[+ Submit A New Form](#)

My Forms

Assigned RA	School	Owner	PI	Co PI	Created Date	Updated Date
Charlotte Brown	SEBE	Paul Westerhoff	Paul Westerhoff	Shahnawaz Sinha	07/19/2016 - 07:31	07/19/2016 - 09:42
Charlotte Brown	SEBE	Olakuye Ogunbiyi	Olakuye Ogunbiyi		07/13/2016 - 11:59	07/14/2016 - 11:59

## 3. Complete



ASU ARIZONA STATE UNIVERSITY

ASU Proposal Intake Form

Dashboard | Calendar | All Forms

### Intake Form

\* Indicates a required field.

Project Title \*  Assigned RA

Type the full project title.

Status  FP Number

Please submit the form  
**MINIMUM ONE MONTH** in  
advance; longer if  
large/complex project

# Getting started: Attend workshops

## Research Advancement Newsletter

ORIEN: Office of Research, Innovation and Entrepreneurship



Photo by Chase Merriwether, ASU

## NSF CAREER Workshop

### **NEW!**

ORIEN invites eligible FSE faculty to register for a workshop focused on strategies for responding to the NSF CAREER solicitation. This workshop, scheduled for March 22, 2024, will be facilitated by Lucy Deckard (Academic Research Funding Strategies, LLC), who spent 16 years as an engineer conducting applied research and has broad experience helping teams prepare proposals for NSF. The workshop will provide insights on how to plan your CAREER project as well as how to write your CAREER proposal. It will include guest speakers, who will discuss additional resources and ideas, as well as a panel discussion with previous CAREER awardees. After the workshop, in-person attendees are invited to join fellow FSE faculty and staff for a networking lunch.

Register [here](#).

# Getting started: Proposal resource library



Ira A. Fulton Schools of Engineering  
**ASU Engineering Faculty Hub**

[Home](#) [New Faculty](#) [Resources](#) [Career Growth](#) [Fulton Schools](#) [Contact us](#)

## Proposal resource library

FSE Research Services Home
Pre-award Support
Post-award Support
Small-cap Investment Program
<b>Proposal Resource Library</b> ▾
Research Services Contacts ▾

The proposal resource library is a one-stop shop for developing proposals. The suite of resources below is applicable to a variety of funding agencies, with information, boilerplate, links, and more related to key topics such as DEI, entrepreneurship, and workforce development. Browse these links and documents to learn more about relevant resources at FSE or ASU and generate ideas for developing successful technical narratives and supplementary documents.

You can browse collections of sample documents by clicking on the appropriate links on this page and each agency-specific page. In addition to samples, in some cases we have contact information for PIs who prefer to share their materials on an individual basis. Note that, while all guides/templates are available to anyone with an ASU account, you must request access to the samples. Approval will be granted ASAP. This ensures an additional layer of security for those files.

If you have any questions about or recommendations for the proposal resource library, please contact [Daniel Froid](#), program manager in ORIEN.

## Resources and templates



### DEI in FSE

Learn more about DEI efforts in FSE and at ASU.

[View fact sheet](#)



### Entrepreneurship and IP

Find quick facts about entrepreneurship in FSE and boilerplate for your proposal.

[Review guide to entrepreneurship](#)

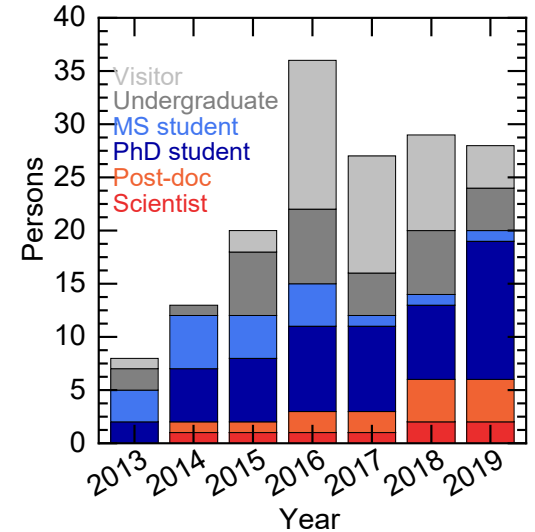
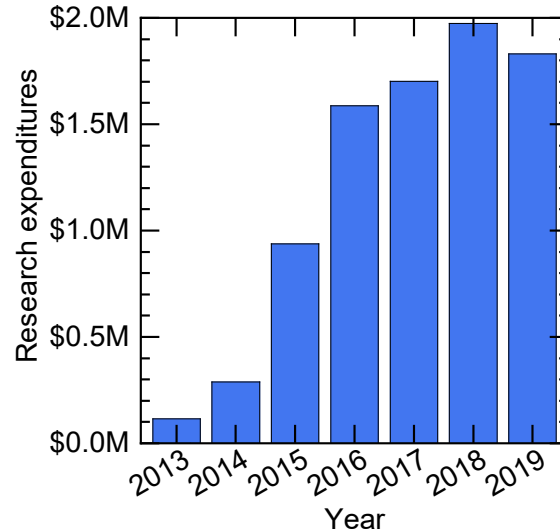
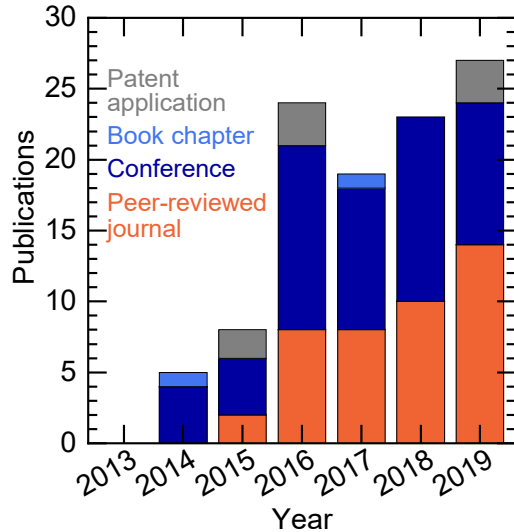
# Getting started: Build your group





# Getting started: Have impact (and fun)!

- I sum up research impact as papers, patents, and people



# Getting started: Research Impact Canvas

Collaborative  
Networks and  
Support Entities

Core Research  
Activities

Core Research  
Assets

Research Value  
Proposition

Early detection  
improves patient  
outcomes

More sensitive tools  
can reduce sample  
sizes in clinical trials  
(allowing drugs to  
succeed or fail  
faster) and better  
measure patient  
safety.

Dissemination  
Channels

Beneficiaries

Patients with  
neurodegenerative  
conditions

Neurologists

Pharmaceutical  
companies

FDA

Mission Cost / Budget

Mission  
Impact

Early treatment, increased accessibility -> improved  
quality of life

Reducing neurologist uncertainty for difficult cases

Reducing cost/timeline to accepting effective drugs

Allows FDA to evaluate impact of interventions on  
speech

**Ira A. Fulton Schools of Engineering**

# **Marketing & Communications**

**Craig Smith**

**[craigsmith@asu.edu](mailto:craigsmith@asu.edu)**



**Lanelle Strawder**

**[lanelle.strawder@asu.edu](mailto:lanelle.strawder@asu.edu)**

# FSE Marcomm Team Leaders

## Get to know us!

Stories • Research and academic updates • Social media • Website maintenance • Media relations • Design support • Event promotion



**Craig Smith**

[craigsmith@asu.edu](mailto:craigsmith@asu.edu)

Director, Strategic  
Marketing and  
Communications



**Lanelle Strawder**

[lanelle.strawder@asu.edu](mailto:lanelle.strawder@asu.edu)

Assistant Director,  
Marketing and  
Communications



**Jenn Jurewicz**

[jdisano@asu.edu](mailto:jdisano@asu.edu)

Web Team Manager



**Dan Traynor**

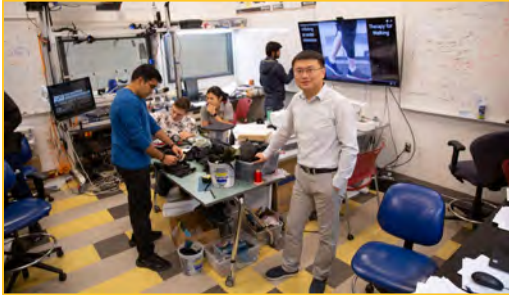
[daniel.traynor@asu.edu](mailto:daniel.traynor@asu.edu)

Creative Team Manager



# Creative Services Team

## What we do



### Lab photoshoots

Schedule a time to photograph your lab when it is full of activity with you and your students.

Photos (or custom illustrations) may also be motivated by stories the writing team is working on.

Email creative team manager,  
[daniel.traynor@asu.edu](mailto:daniel.traynor@asu.edu)



### Professional portraits

Visit the University's portrait studio. A great portrait helps us promote and celebrate your accomplishments! Visit the ASU Brand Guide for hours.

[brandguide.asu.edu/requests/  
services/portrait-headshot](https://brandguide.asu.edu/requests/services/portrait-headshot)

Have a request for photos, signage or an idea for a story? Use our online form to request a project:

[Communications  
Project Request Form](#)

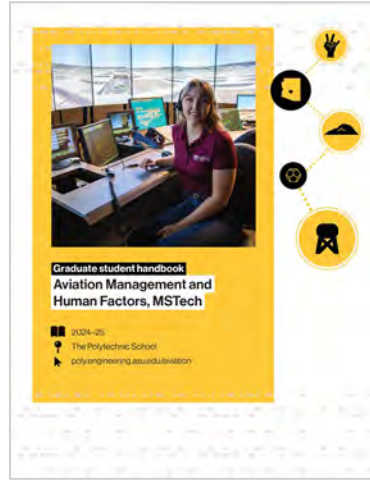
We are comprised of creatives who amplify the ASU brand with FSE faculty and students on projects ranging from signage, swag, multi-page publications, flyers, postcards, videos, social media assets and more.

[comm.engineering.asu.edu](https://comm.engineering.asu.edu)

# Custom marketing pieces



Event marketing



Social media graphics



Custom branded swag giveaway items

Degree program material



Promotional banners for events



# Reputational Marketing

**ASU** Ira A. Fulton Schools of Engineering  
Arizona State University

School of Computing and Augmented Intelligence

## Engineer your advancement

New online **Doctor of Engineering** or **DEng**, in **engineering management\*** is now enrolling.

**Flexible, fully online** program for engineering professionals seeking to move into high-level leadership roles.

# #5

in engineering management, online master's program

— U.S. News & World Report, 2024

[links.asu.edu/DEng](https://links.asu.edu/DEng)

Promotional print mailer

**ASU** Ira A. Fulton Schools of Engineering  
Arizona State University

## ASU Engineering Innovations

### 2022 NSF CAREER AWARDS

Faculty excellence

## 10 ASU Engineering faculty earn NSF CAREER Award

To date, 10 ASU Engineering faculty members have earned National Science Foundation Faculty Early Career Development Program (CAREER) Awards in 2022. Their awards total an estimated \$5.7 million to fund novel research across multiple engineering disciplines over the next five years. Earning the NSF CAREER Award is a hallmark achievement for these driven scholars who have developed comprehensive plans to integrate impactful research and meaningful educational experiences for engineering, computing and technology students.

In the past three years, 32 ASU Engineering faculty members have earned the prestigious NSF CAREER Award.

[Read more](#)

**ASU** Ira A. Fulton Schools of Engineering  
Arizona State University

## Producing world-class engineers, scientists, technologists, innovators and entrepreneurs

[engineering.asu.edu](https://engineering.asu.edu)

### #1 in the U.S. for innovation

ASU ahead of MIT and Stanford

- 30,000+ students enrolled\*
- 25+ undergraduate programs
- 50+ graduate programs
- \$145M research expenditures

- 8 Transdisciplinary centers
- 490 faculty across all ranks
- #11 women as tenure/tenure-track faculty
- 85 Members of the National Academies and distinguished societies
- 2 campuses + online

Gatefold print mailer to peer Engineering Deans Fall mailing

SalesForce Marketing Cloud emails to peer Engineering Deans (x2 in Spring, x3 in Fall)

## The future of manufacturing is at ASU

**ASU** Ira A. Fulton Schools of Engineering  
Arizona State University

ASEE First Bell email ad campaign (7 ads, May-June)

**ASU** Ira A. Fulton Schools of Engineering  
Arizona State University

School of Biological and Health Systems Engineering

## Biomedical engineering

Listen: Biomaging innovations

ASU's School of Biological and Health Systems Engineering has several faculty members working in the areas of systems biology and molecular imaging. In the latest episode of the *Convergence* podcast, Assistant Professors Benjamin Bartelme and Scott Bowman discuss advances in non-invasive magnetic resonance imaging and how it can be used to detect inflammation and quantify lineage structures and functions. Join these biomedical engineers as they discuss their work and the importance of helping students understand how they can contribute to impactful research.

[Listen](#)

SalesForce Marketing Cloud emails to peer program chairs (7 emails + 1 podcast)

# Content and embedded teams

## What we do

### Share impact.

Let the public and other external audiences, including your peers, know about your **latest research news**, significant **awards** and **accomplishments**.

Share **student success** stories.



### Develop content.

Produce stories and content for **Full Circle**, the engineering news blog; **ASU News**, the university news site; and other **external media outlets**.

Manage and disseminate news updates to the engineering community via the **In the Loop** (faculty/staff) and **Inner Circle** (student) newsletters.

### Build connections.

Manage **public relations** and **external media outreach** for FSE.

**Coordinate** with ASU Media Relations and other enterprise partners to share your news more broadly.

**Support** communications functions of research grants (upon review).



# Content and embedded teams

## How YOU can help US share your news

We want current and prospective students, the ASU community, parents, alumni, external media and the public at-large to **learn about** your achievements and research advancements.

### Giving our team plenty of lead time (3 to 6 weeks or more)

Let us know about research papers of significant impact and those submitted to high impact journals (e.g., imprints for Science or Nature, Advanced Materials, ACS Nano, etc.) **at the time of submission.**

Submitting requests for writing or content editing via the [Communications Project Request Form](#).



### Providing as much information as possible

This includes:

- Why this development is newsworthy.
- Contact information for any collaborators.
- Relevant dates if your request is tied to an event.
- Abstracts, paper or proposal, or a description of your work in layman's terms.

# Content and embedded teams

## 2023–24 Accomplishments

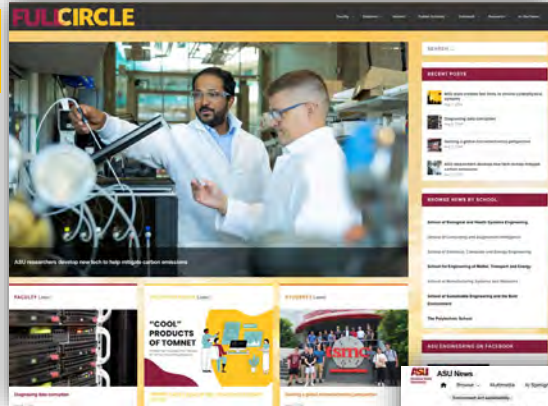
Contributed **+200 pieces of content** to ASU News, making FSE a leader among ASU units for article submissions.

Earned more than **2,400\* unique media placements** in online and consumer media outlets, trade publications and industry blogs.

Developing content to support undergraduate and graduate reputational marketing efforts, school/university partnerships, and currently developing profiles for **more than 50 new FSE faculty members**.

Coordinated efforts with ASU Media Relations and the Enterprise Brand Strategy and Management team to yield several **high-impact engineering-related stories**, including:

- Features in multiple issues of ASU's Thrive magazine.
- Highlights in ASU's media and public relations efforts related to the New Economy Initiative and the national microelectronics efforts.
- Extensive media coverage and subject matter expertise among faculty.



Full Circle



ASU Thrive



ASU News



Media engagements

\*Media impressions tracked by Cision media reporting services.

# Embedded Team Communications Specialists

Share your good news! Reach out to your school's embedded communicator.

Stories • Research and academic updates • Social media • Website maintenance • Media relations • Design support • Event promotion



**Allison Lyne**

[alyne@asu.edu](mailto:alyne@asu.edu)

School of Biological  
and Health Systems  
Engineering



**Kelly DeVos**

[kelly.devos@asu.edu](mailto:kelly.devos@asu.edu)

School of Computing  
and Augmented  
Intelligence



**AJ Montes**

[amontes@asu.edu](mailto:amontes@asu.edu)

School of Electrical,  
Computer and Energy  
Engineering



**Roger Ndayisaba**

[roger.ndayisaba@asu.edu](mailto:roger.ndayisaba@asu.edu)

School for Engineering  
of Matter, Transport and  
Energy

# Embedded Team Communications Specialists

Share your good news! Reach out to your school's embedded communicator.

Stories • Research and academic updates • Social media • Website maintenance • Media relations • Design support • Event promotion



**Aisha Kaddi**

[aisha.kaddi@asu.edu](mailto:aisha.kaddi@asu.edu)

School of  
Manufacturing  
Systems and Networks



**Lisa Irish**

[lirish@asu.edu](mailto:lirish@asu.edu)

School of Sustainable  
Engineering and the  
Built Environment



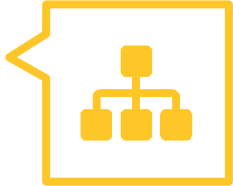
**Joy Gaeraths**

[joy.gaeraths@asu.edu](mailto:joy.gaeraths@asu.edu)

The Polytechnic  
School



# Helpful links to contribute your news



## FSE Project Request form

Reach out to the FSE Marketing and Communications team to find out how we can support you.

<https://comm.engineering.asu.edu/>



## In the Loop

Events, opportunities and news for Fulton Schools faculty and staff. Check your inbox for In the Loop emails on Wednesday afternoons. You can also contribute your own updates to your FSE peers here:

<https://intheloop.engineering.asu.edu/contribute/>



## Inner Circle

Find the latest opportunities for Fulton Schools students. Share news and updates for Fulton Schools students here:

<https://innercircle.engineering.asu.edu/contribute/>

# ASU brand standards

**ASU's brand platform** is an enduring, strategic internal statement that defines and guides the positioning of the university in the marketplace. It informs how ASU's brand essence is communicated and it helps keep those communications and creative manifestations consistent, unified and complementary.

[brandguide.asu.edu](https://brandguide.asu.edu)

## Logos

Logos aren't just embellishments; they concisely represent the university brand. Learn how to use approved logos — and how not to.

## Writing style

From email signatures to reports, follow these guidelines to ensure that your audience understands the message you want to convey.

## Fonts and typography

When to use Neue Haas Grotesk\* and when to use Arial, and how to express the ASU brand through typography.

\*Note: Neue Haas Grotesk replaced Akzidenz Grotesk Summer 2022.

## Color palette

There's more to our color palette than just maroon and gold. Find the right colors for your digital and printed projects.

## Photography and video

From ASU-branded imagery to tips on capturing your own photos and video, these guidelines ensure that your visuals convey the ASU story.

## Templates, galleries and libraries

These tools can help you get started quickly and keep your work on brand.

# Other branded templates for your use

## Google documents template

Use this template to start any new document with brand-aligned heading, text styles and color palette.

[Get the template](#)

## Google Sheets template

Start any new spreadsheet from this document to have the ASU color palette and font styles ready for your use.

[Get the template](#)

## One pager Google Slides template

For those who need a quick streamlined solution to creating on-brand single page or simple multi-page documents and flyers.

[Get the template](#)

# Do you need a website?

The Fulton Schools Web Team can help you find a solution.

Learn more about your options at [comm.engineering.asu.edu/websites](http://comm.engineering.asu.edu/websites)



## ASU Search

Online directory profiles for everyone at ASU.

Google searches for your name usually display this as the top result.

Easy to update.



## WordPress

Our Pitchfork theme is a WordPress website adhering to ASU Web Standards.

Fulton Schools Web Services provides web hosting and software updates.

You maintain it.



## Drupal

ASU provides a Drupal theme called Webspark that adheres to ASU Web Standards.

You pay for hosting and maintain your own software updates.



## ASU Web Standards

Any website using an ASU domain name (e.g. engineering.asu.edu) must follow ASU Web Standards for page design, font and color palette.

[brandguide.asu.edu](http://brandguide.asu.edu)



# Web Services support

If you have questions about using WordPress or need assistance with your website, we're here to help.

Visit our web page for more information:

<https://comm.engineering.asu.edu/web-services>

To set up a meeting with someone from our team, go to the support and services section and click the Make an appointment button.

ASU Fulton Schools of Engineering  
Strategic Marketing and Communications

## Fulton Schools Web Services

We build elegant and accessible websites that help to connect future engineers to the Fulton Schools and its many excellent offerings.

If you need help with an existing website, please submit a support request and we'll get started.

[Submit a request](#)

### Represent yourself online

At ASU, we are fortunate to have several options for online representation of accounts and our data, lists and content.

#### ASU web directory profile (search.asu.edu)

You don't need a website to have a record with potential. Our ASU web directory profile has you set up quickly, ready at all of the digital touchpoints.

Have problems updating your profile? We can help guide you on the steps you can quickly resolve, and those which require assistance of a directory administrator.

[Edit your profile](#)

#### WordPress website with Pictbook

We have designed a custom WordPress theme that looks like the "Books" layout of the site. WordPress is a completely cost-effective management system (CMS). But almost "retrofit" to both websites already.

We can get you comfortable with the theme and provide help as you roll out your site's content through after hours, evening, documentation and advice. WordPress websites are hosted and supported by the web team.

[Request a site](#)

#### Drupal website with ASU WebSpark

ASU Enterprise Technology (ET) has an alternative to Drupal or SharePoint called WebSpark, which runs on Drupal content management system.

Although we work exclusively in Drupal, we can get you comfortable in the ASU theme and can help you get a Drupal website a major WebSpark site or equipped by ASU ET, and they can offer after hours and have a support community.

[About more](#)

### We provide support and services

Through our documentation and individual discussions we can help with:

- Migrating ASU web directory profiles (contact accounts)
- Maintaining your WordPress locally and live versions
- Information and feedback on website accessibility
- Google Analytics reports for your website
- Data administration of existing Engineering websites
- Content management through Drupal and mobile native applications (ASU)

### How to get support

#### Check our documentation

We've got documentation to help you learn about WordPress and the Pictbook theme, including instructions to build new or update existing.

#### Meet with us

Sign up for a 30-minute appointment with a team member. We can answer your questions and share and help to solve immediate issues.

[Learn more](#) [Make an appointment](#)

### Inner Circle and in the Loop assistance

Struggling to make new data on your ASU ET? Having trouble formatting and publishing? Want to make sure you're using the right tool?

We can help. Sign up for a time to meet with one of our team members.

[Make an appointment](#)

# Web Services support

If you have specific questions about your ASU Search page, please contact Kristin Gasser, Application Developer (IT) at [kbgasser@asu.edu](mailto:kbgasser@asu.edu).

The screenshot shows the ASU Search website. At the top, there is a navigation bar with the ASU logo and the text "ASU Search". Below this, there is a search bar with the placeholder text "Search asu.edu" and a "Search" button. To the right of the search bar is an "Edit my profile" button. Below the search bar, there are three tabs: "All ASU Search", "Faculty and Staff", and "Students". The main content area features a "Welcome to ASU search" heading, followed by the text "Find the information you're looking for from anywhere on asu.edu." and a "Need assistance?" section with the text "Contact us via live chat, phone or email 24 hours a day, seven days a week." On the right side, there is a "Quick links" section with several links: "ASU directory", "ASU advising directory by college", "ASU's colleges and schools", "Search majors and degree programs", "ASU class search", "ASU Library One search", "ASU news", "ASU events calendar", and "Search ASU job openings". At the bottom left, there is a link for "Release notes".

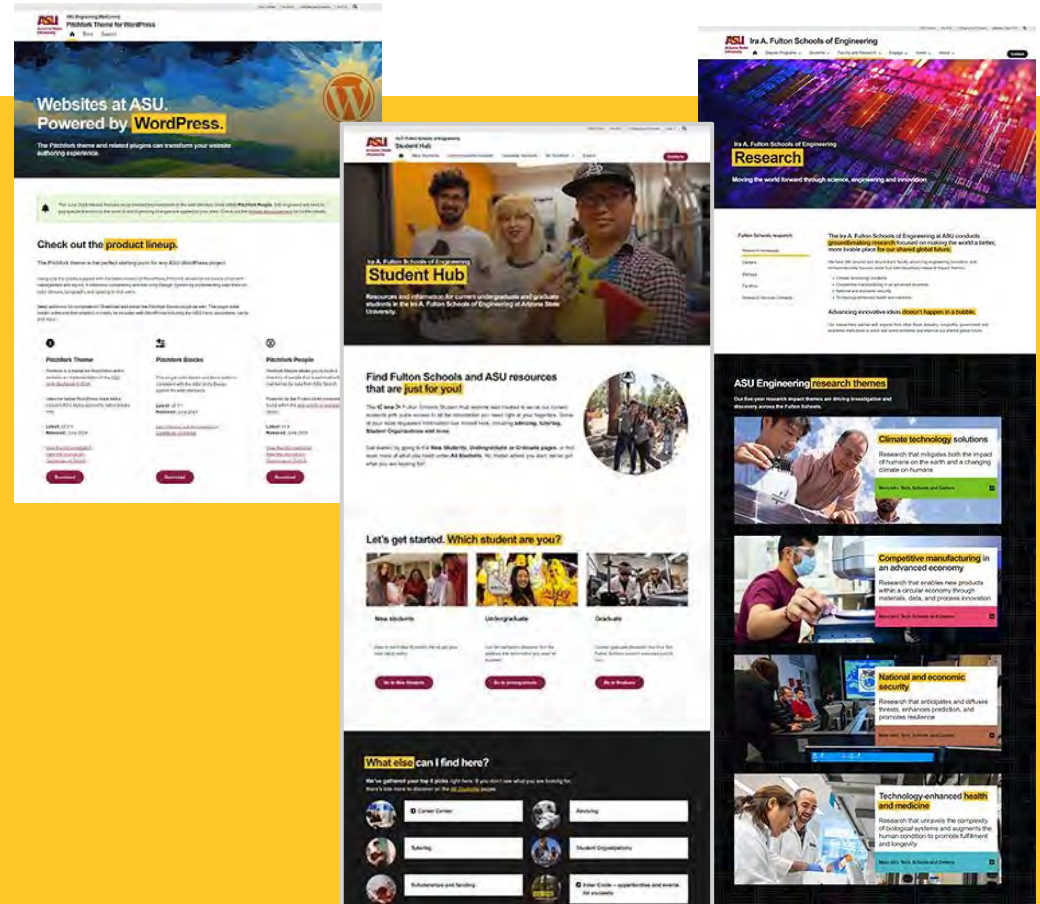
# Recent web accomplishments

We are continuing to upgrade our websites to our ASU Web Standards-compliant WordPress theme called Pitchfork. We have developed extensive training materials for our users, most of whom are faculty.

We are nearing completion of migrating websites off our old web host, Pantheon. There were nearly 300 websites on Pantheon and now they are hosted in an improved environment on WPEngine. With the migration, many faculty are getting upgrades to their web presence due to using a theme that was no longer support.

Moved research website content to [engineering.asu.edu/research](http://engineering.asu.edu/research) and [faculty.engineering.asu.edu](http://faculty.engineering.asu.edu). The content was reorganized for different audiences.

Launched the Student Hub website, combining all student-facing websites into one.



Ira A. Fulton Schools of Engineering

# Marketing & Communications



Craig Smith  
[craigsmith@asu.edu](mailto:craigsmith@asu.edu)

Lanelle Strawder  
[lanelle.strawder@asu.edu](mailto:lanelle.strawder@asu.edu)



# FSE Facilities Space Planning, Infrastructure and Safety

Prepared by Ricardo Reina  
Prepared on 08.12.2024

# Overview

1. **Interesting Facts**
2. **Introduction to ASU Facilities Management**
3. **FSE Facilities and Safety Team**
4. **School's Facilities Support**
5. **Equipment Procurement – Best Practice**
6. **Office Space and Student Seats**
7. **Research Lab Space**
8. **Small Infrastructure Changes**

# 1. Fun Facts

- ~2,700 assignable spaces within FSE.
- ~800,000 square feet of assignable space.
- ~290,000 square feet of Research Labs and Lab Support Areas.
- ~370 Responsible Faculty Members (Principal Investigators)
- Across 20+ buildings.
- Across Tempe, Polytechnic, MTW, Health Futures Center.
- Footprint about to grow at West Campus with SIE.
- ISTB12 (~160,000 sf) opening in August 2025 at Polytechnic.
- Research spaces at West Campus projected for Fall 2026.

## 2. Introduction to ASU Facilities Management

- **Facilities Management and Development (FDM)**
  - ASU's centralized facilities team responsible for anything related to buildings and grounds, including but not limited to the following:
    - Building Maintenance and Repairs, Construction of New Buildings, Remodel of Existing Buildings, Janitorial Services, Keys Management, Landscaping, Infrastructure Modifications, Signage, etc.
- **Environmental, Health and Safety (EHS)**
  - ASU's centralized team implementing and enforcing codes, rules and regulations as related to EHS, including but not limited to:
    - ADA compliance, Fire Protection, Emergency Egress, Handling of chemicals, Radiation Safety, Handling of Hazardous Materials, etc.



## 2. Introduction to ASU Facilities Management

- **FSE Facilities and Safety**
  - College-level team providing support to all FSE Schools.
  - Typically, the middle-man between FSE Schools and Central Facilities and EHS.
  - Ensuring strategic alignment across all Schools and units of FSE.
  - Ensuring alignment between FSE and University's strategic plans.

## 2. Introduction to ASU Facilities Management

- **School's Facilities Support (including Lab Management)**
  - First-line support for anything related to Facilities and Labs.
  - Experts on the buildings and labs occupied by their customers.
  - In-depth understanding of operations within the School, on the academic and research side.
  - In-depth knowledge of building systems, infrastructure and EHS codes and regulations.

# 3. FSE Facilities and Safety – Roles

- **Projects Managers – Cary Stoneman and Scott McAdams**
  - Customer's Representative during the life of a capital project (over \$100k), from inception (idea) to construction completion.
- **Projects Coordinator – Albert Victoria**
  - Planning and execution of projects with cost below \$100k.
  - Focused on expediting the delivery of lab infrastructure upgrades such as adding or modifying electrical circuits.

# 3. FSE Facilities and Safety – Roles

- **Research Support Services – Darrian Judkins, Gabriel Casillas, and Michael Wagner**
  - Provide hands-on support for anything related to supporting research activities within FSE, including but not limited to: Moving equipment and/or furniture, connecting equipment to utilities, designing and building custom lab furniture (lab benches, etc.), designing and building custom fixtures.
  - Perform space remodel services not requiring a permit, such as patch and paint, installing new carpet, installing new furniture, etc.



# 3. FSE Facilities and Safety – Roles

- **Assistant Director of Infrastructure and Safety – Rita Bottesch**
  - Liaison with central EHS.
  - Consultant for lab managers, researchers and grad students providing guidance on code compliance and best practices.
- **Director of Facilities Space Planning, Infrastructure and Safety – Ricardo Reina**
  - Oversees space allocations within Schools and across FSE.
  - Liaison with Knowledge Enterprise and University Planning Office.

# 4. School's Facilities Support – Roles

- **Facilities Manager (sometimes also IT Manager)**
  - 1<sup>st</sup> point of contact for anything related to Facilities:
    - Environmental Health and Safety (EHS), Space Assignments, Projects, Infrastructure Modifications, Furniture, Moves, etc.
- **Lab Manager**
  - 1<sup>st</sup> point of contact for anything related to a lab, not limited to Facilities, Infrastructure and Safety.
  - Support for the day-to-day operations of labs.

# 4. School's Facilities Support – POCs

- **School of Biological and Health Systems Engineering (SBHSE)**

- Lab Manager – Alana LaBelle ([alana.labelle@asu.edu](mailto:alana.labelle@asu.edu))
- Research Director – Sarah Stabenfeldt ([Sarah.Stabenfeldt@asu.edu](mailto:Sarah.Stabenfeldt@asu.edu))

- **School of Computing and Augmented Intelligence (SCAI)**

- Lab Manager – Nicholas Beck ([Nicholas.R.Beck@asu.edu](mailto:Nicholas.R.Beck@asu.edu))
- Assistant Director of IT and Facilities ([lincoln.slade@asu.edu](mailto:lincoln.slade@asu.edu))

- **School of Electrical, Computer and Energy Engineering (SECEE)**

- IT and Facilities Manager – Nicholas Deardeuff ([Nicholas.Deardeuff@asu.edu](mailto:Nicholas.Deardeuff@asu.edu))
- Lab Manager – Ashley Jones ([Ashley.Jones.3@asu.edu](mailto:Ashley.Jones.3@asu.edu))

## 4. School's Facilities Support – POCs

- **School for Engineering of Matter, Transport and Energy (SEMTE)**
  - Facilities Manager – Myrna Martinez ([myrna.martinez@asu.edu](mailto:myrna.martinez@asu.edu))
  - Lab Manager – Fred Pena ([fred.pena@asu.edu](mailto:fred.pena@asu.edu))
- **School of Integrated Engineering (SIE)**
  - TBD
- **School of Manufacturing Systems and Networks (SMSN)**
  - Lab Manager – Fabiano Carvalho ([Fabiano.Carvalho@asu.edu](mailto:Fabiano.Carvalho@asu.edu))
  - Assistant Director for Lab Management – Bruno Azeredo ([Bruno.Azeredo@asu.edu](mailto:Bruno.Azeredo@asu.edu))



# 4. School's Facilities Support – POCs

- **School of Sustainable Engineering and the Built Environment (SSEBE)**

- Lab Manager (Wet Labs) – Jason Jedinak ([jason.jedinak@asu.edu](mailto:jason.jedinak@asu.edu))
- Lab Manager (Dry Labs) – Jeff Long ([jjlong@asu.edu](mailto:jjlong@asu.edu))
- IT and Facilities Manager – Garrett Perea ([garrett.perea@asu.edu](mailto:garrett.perea@asu.edu))
- Associate Director – Matt Fraser ([Matthew.Fraser@asu.edu](mailto:Matthew.Fraser@asu.edu))

- **The Polytechnic School (TPS)**

- Lab Manager – Rhett Sweeney ([Rhett.Sweeney@asu.edu](mailto:Rhett.Sweeney@asu.edu))
- Lab Manager – Ashok Kumar ([avkumar1@asu.edu](mailto:avkumar1@asu.edu))
- IT and Facilities Manager – Kevin Steverson ([Kevin.Steverson@asu.edu](mailto:Kevin.Steverson@asu.edu))

# 5. Equipment Procurement – Best Practice

- Lab Manager can provide a quick review to verify if all the right capabilities (power, gases, etc.) are available in the space to accommodate the new equipment.
- If additional space or infrastructure modifications are necessary, the Lab Manager can get the process initiated to figure out the timeline and cost.
- Lab Manager can provide guidance on shipping address and how to get the equipment into the lab and properly installed.

## 6. Office and Seats for Grad Students

- Handled at the School level.
- School Facilities Manager or Lab Manager will contact new hire to provide office assignment before arrival to ASU.
- School Facilities Manager or Lab Manager will ensure provide information on seats available for grad students and post-docs.
- Existing faculty can reach out to School's Facilities Manager when they need additional office space or student seats.
- Changes to office furniture can be requested with the School's Facilities Manager.

# 7. Research Lab Space

1. Permanent Lab assignments are often not ready on day 1, but School plans for temporary lab space to be available for new hire as soon as possible.
2. FSE Project Manager gathers all the space and infrastructure requirements directly from researcher, including but not limited to detailed description of research, equipment list, chemicals and gases inventories and other special requirements.
3. FSE PM reviews requirements with FSE Safety, School's Facilities Manager and Lab Manager and other technical experts.



## 7. Research Lab Space

3. FSE Director of Space Planning works with School leadership to determine the best available lab space and if there will be a need for capital renovations.
4. FSE Director or School Director notifies new hire of lab assignment and discuss next steps and corresponding timeline.
5. If lab requires minor infrastructure upgrades, researcher can start using the space right away and execution of changes typically take about 2 months.

## 7. Research Lab Space

7. If lab requires major renovations (over \$100k in cost), a capital project will be required, and it usually takes 9-12 months for execution.
8. For lab renovations involving a capital project, the faculty member will be invited to participate in formal design development meetings and will receive regular updates design and construction.

## 8. Small Infrastructure Changes

- Small infrastructure improvements included but are not limited to moving power outlets, additional power circuits, connecting equipment to exhaust, among others.
- Those type of changes should be requested to the School Facilities Manager or Lab Manager.
- Typically take 4-8 weeks for completion.
- Research is responsible for cost.

# Backup Info



# ASU color palette

**Primary colors.**  
These should be your first color choices and used more prominently than secondary colors



<b>ASU Gold</b> #FFC627	<b>ASU Maroon</b> #8C1D40	<b>ASU Black</b> #000000	<b>ASU White</b> #FFFFFF
----------------------------	------------------------------	-----------------------------	-----------------------------

**Secondary colors.** Use as accents. Only use in addition to primary. May not be used without primary brand colors.



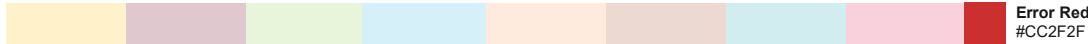
<b>ASU Green</b> #78BE20	<b>ASU Blue</b> #00A3E0	<b>ASU Orange</b> #FF7F32	<b>ASU Copper</b> #AF674B	<b>ASU Turquoise</b> #4AB7C4	<b>ASU Pink</b> #E74973	<b>ASU Gray</b> #747474
-----------------------------	----------------------------	------------------------------	------------------------------	---------------------------------	----------------------------	----------------------------

**ASU Grayscale.** For text, line and fill colors. ASU Gray is a part of this scale.



<b>ASU Black</b> #000000	<b>Gray 1</b> #191919	<b>Gray 2</b> #484848	<b>ASU Gray</b> #747474 (Gray 3)	<b>Gray 4</b> #BFBFBF	<b>Gray 5</b> #D0D0D0	<b>Gray 6</b> #E8E8E8	<b>Gray 7</b> #FAFAFA	<b>ASU White</b> #FFFFFF
-----------------------------	--------------------------	--------------------------	--	--------------------------	--------------------------	--------------------------	--------------------------	-----------------------------

**Color tints.** Brand palette tint variations for use in data visualizations and spreadsheets

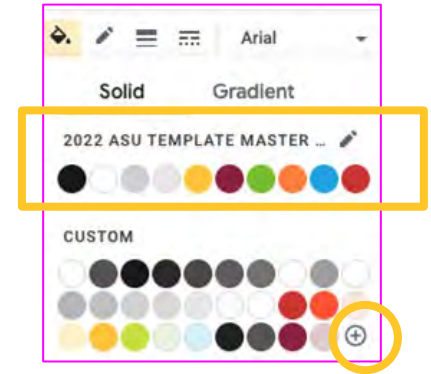


25% ASU Gold #FFF1C9	25% ASU Maroon #DFC9CF	25% ASU Green #E9F5DB	25% ASU Blue #D6F0FA	25% ASU Orange #FFEADE	25% ASU Copper #EBD9D2	25% ASU Turquoise #D2EDF0	25% ASU Pink #F9D1DC	<b>Error Red</b> #CC2F2F
-------------------------	---------------------------	--------------------------	-------------------------	---------------------------	---------------------------	------------------------------	-------------------------	-----------------------------

**For digital use only** to indicate system errors, issues or negative number values.

## How to change colors listed as part of ASU presentation theme.

When choosing text and background color combinations, **the more contrast between the two colors, the more readable it will be for your audience.**



Note: There is a maximum number of spots available for template colors. **To use colors shown on this slide that are not part of the template master,** click the '+' and add them using the six character #Hexcode number listed on this slide..



# FSE Dean's Office, Infrastructure and Safety Team

## Lab Safety Culture

*Helping you navigate through planning and implementation, to facilitate your research needs.*

# FSE DO Infrastructure and Safety Team



**Rita Bottesch**

**Assistant Director,**

**Ira A. Fulton Schools of Engineering (FSE)**

**[Rita.Bottesch@asu.edu](mailto:Rita.Bottesch@asu.edu)    **(480) 965-7138****

Rita has worked in this FSE Role for 5 years. She worked in the FSE ECEE School as a Lab Manager for 3 years. She brings 26 years of Semiconductor Manufacturing Industry experience; 15 years at Intel, and 11 years at ASU FEDC (at ASU's Research Park). Her Cross-Functional Engineering Disciplines experience in Technical Leadership Roles enables Quality Support for FSE.

**The FSE DO IaST are Dedicated Safety Specialists responsible for the over-arching Safety Responsibilities across all FSE Schools.**

## FSE DO Infrastructure and Safety Team

- A Team devoted to providing safety and services for all FSE schools, faculty, researchers, staff, and students.
- Primary Goal: Provide a central hub of resources and information to assist day-to-day and long-term activities, while ensuring safe work, research, and learning environments.
- Comprised of representatives that include safety professionals in each FSE school. Our concept is to focus on Safety rather than just compliance.
- Department Contacts are your first line of defense: Infrastructure/IT Managers, Teaching Lab Managers, and Research Lab Managers.
- Website: <https://safe.engineering.asu.edu/laST>

# FSE DO Infrastructure and Safety Team

Name	Email	FSE School	Title
Showmik Alam	<a href="mailto:Showmik.Alam@asu.edu">Showmik.Alam@asu.edu</a>	SBHSE	Laboratory Coordinator, Sr.
Nick Beck	<a href="mailto:Nicholas.R.Beck@asu.edu">Nicholas.R.Beck@asu.edu</a>	SCAI	Laboratory Manager
Rita Bottesch	<a href="mailto:Rita.Bottesch@asu.edu">Rita.Bottesch@asu.edu</a>	FSE DO Infra. and Safety Team	Asst Director
Leonard Bucholz	<a href="mailto:Lenny.Bucholz@asu.edu">Lenny.Bucholz@asu.edu</a>	SEMTE	MAE Machine Shop Manager
Fabiano Carvalho	<a href="mailto:Fabiano.Carvalho@asu.edu">Fabiano.Carvalho@asu.edu</a>	MSN	Research Lab Manager - Asst Prof.
Paul Dahlen	<a href="mailto:Paul.Dahlen@asu.edu">Paul.Dahlen@asu.edu</a>	SSEBE	Research Lab Manager - Asst Prof.
Nick Deardueff	<a href="mailto:Nicholas.Deardueff@asu.edu">Nicholas.Deardueff@asu.edu</a>	ECEE	Manager, Information Technology
Sean Dengler	<a href="mailto:dengler@asu.edu">dengler@asu.edu</a>	TPS	Laboratory Support
Justin Herring	<a href="mailto:Justin.Herring@asu.edu">Justin.Herring@asu.edu</a>	ASA	Facilities Supervisor
Jason Jedinak	<a href="mailto:Jason.Jedinak@asu.edu">Jason.Jedinak@asu.edu</a>	SSEBE	Laboratory Manager, Eng
Ashley Jones	<a href="mailto:Ashley.Jones3@asu.edu">Ashley.Jones3@asu.edu</a>	ECEE	Laboratory and Safety Manager
Steve Jordan	<a href="mailto:steven.ross.jordan@asu.edu">steven.ross.jordan@asu.edu</a>	SEMTE	Laboratory Manager
Darrian Judkins	<a href="mailto:Darrian.Judkins@asu.edu">Darrian.Judkins@asu.edu</a>	FSE DO Infrastructure RSS	RSS Shop Manager
Dallas Kinsbury	<a href="mailto:kingsbury@asu.edu">kingsbury@asu.edu</a>	SEMTE	Laboratory Manager
Alana Labelle	<a href="mailto:asmit16@mainex1.asu.edu">asmit16@mainex1.asu.edu</a>	SBHSE	Laboratory Manager
Jeffrey Long	<a href="mailto:jjlong@asu.edu">jjlong@asu.edu</a>	SSEBE	Laboratory Manager, Eng
Myrna Martinez	<a href="mailto:Myrna.Martinez@asu.edu">Myrna.Martinez@asu.edu</a>	SEMTE	Facilities Services Manager
Scott McAdams	<a href="mailto:Christopher.McAdams@asu.edu">Christopher.McAdams@asu.edu</a>	FSE DO Infra Facil.	Project Manager
Cameron Noe	<a href="mailto:cnoe1@mainex1.asu.edu">cnoe1@mainex1.asu.edu</a>	TPS	Laboratory Support
Josh Patton	<a href="mailto:Joshua.D.Patton@asu.edu">Joshua.D.Patton@asu.edu</a>	TPS	Machinist Sr.
Fred Pena	<a href="mailto:Fred.Pena@asu.edu">Fred.Pena@asu.edu</a>	SEMTE	Laboratory Manager
Ricardo Reina	<a href="mailto:Ricardo.Reina@asu.edu">Ricardo.Reina@asu.edu</a>	FSE Facilities, Space Plan. & Assmt.	Director
Lincoln Slade	<a href="mailto:Lincoln.Slade@asu.edu">Lincoln.Slade@asu.edu</a>	SCAI	Asst Dir Information Technology
Bruce Steele	<a href="mailto:Bruce.Steele@asu.edu">Bruce.Steele@asu.edu</a>	SEMTE	Laboratory Manager
Cary Stoneman	<a href="mailto:Cary.Stoneman@asu.edu">Cary.Stoneman@asu.edu</a>	FSE DO Infrastructure Facil.	Project Manager
Rhett Sweeney	<a href="mailto:Rhett.Sweeney@asu.edu">Rhett.Sweeney@asu.edu</a>	TPS	Laboratory Manager
Beau Yonge	<a href="mailto:Beau.Yonge@asu.edu">Beau.Yonge@asu.edu</a>	EDO/ASA	Facilities Coordinator



## FSE DO Infrastructure and Safety Team

- As a Team, we combine and implement a higher level of Safety Standard through elevating each FSE School by shared experience/ knowledge and Best-Known Methods/ Practices from each area of Expertise. We have many Industry Experienced Team members.
- We come together to discuss Safety Issues/ Concerns across all Engineering Disciplines. Many of our Lab Managers support Labs that have Interdisciplinary Science Research Teams. We learn from each other's successes and incidents. We adapt quickly to evolving technology and research activities.
- Teaching Labs provide a setting for learning with controlled experiments and Safety oversight. Students receive instruction in the Lab setting and learn through hands-on experience about the Safety aspects of the Research Activity within the Lab setting. Training requirements are met prior to any work being performed in the Labs. Demonstrated skills are a requirement to move to independent work in a Lab. Teaching Lab Pre-requisites ensure someone is trained prior to working in the Lab.
- We are available for reviewing specialty areas of concern or new areas of Research. We can guide you to resources or information in areas that are leading edge. We provide assistance with any Lab Specific Safety Training needs.

# Our Team is here to assist:

## Support for All FSE Schools of Engineering

Support for All FSE Schools of Engineering (Offices, Classrooms, Teaching Labs and Research Labs).

Provide Communication for required ASU EHS Safety Training

Assist with Lab Documentation for Lab startup, forms and template files to aid in your startup.

**New Lab?**

Provide guidance and help create an environment that promotes sharing best known methods and safety practices from all FSE Labs.

Liaison for FSE to other functional groups: ASU Facilities Management, ASU Safety Partners (Environmental Health and Safety – EHS), Enterprise Technology (ET – computing support), and Business Services.

## Resource for Information and Guidance

Link people to guidance information and resources they need to accomplish their duties in a safe and effective manner. **New-chemical?**

Provide services to support Safe Lab Activities:

- . Lab Registrations;
- . Lab Safety Inspections;
- . Chemical approvals prior to Chemical orders;
- . SOP (Standard Operating Procedures) templates;
- . Reviews for chemical processes prior to use;
- . Reviews for hazardous tasks prior to use;
- . Lab Renovation Design Reviews;
- . Follow-up to closure on all Environmental Health and Safety issues.

## Resource to FSE and ASU Community

Participate on University-wide and FSE Safety Programs/Teams. Ensure adherence/compliance to all regulatory laws, rules, and guidelines.

Serve as role models for EHS best practices, as well as behavior and communications to create a focus on Safety Culture.

We are dedicated to “keeping students safe”. We promote and facilitate lab safety culture for FSE. We encourage people to engage their daily activities with a focus on Safety.

We welcome all questions and dialogue on research activities.

Please feel free to email us on any topic. We are available to meet with you in your Research environments or office areas.

*Thank you for your time.*

# Welcome New Faculty

Jim Collofello

Vice Dean Academic and Student Affairs

# ASA Activities

- Recruitment
  - Outreach
- Retention
  - E2 camp
  - FSE 100, ASU 101, Homework Zero
  - UGTAs
  - Tutoring
  - Intervention for struggling students
- Residential Communities
- Scholarships





# mentors



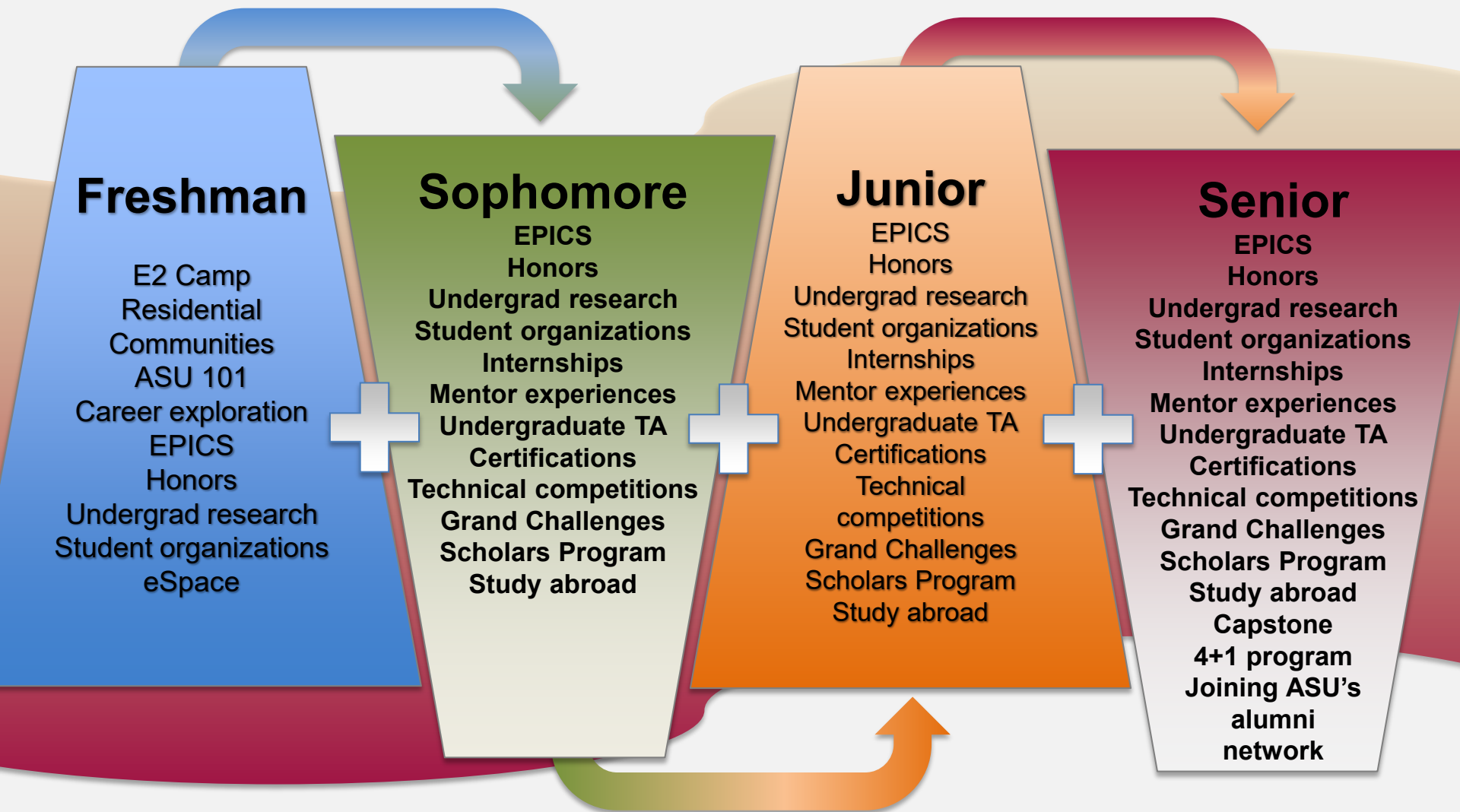


**eSpace**

# ASA Activities

- “Fulton Difference”
  - FURI
  - EPICS
  - GCSP
  - Internships
  - Student organizations and student government
- Tutoring services
- Academic Administration
- Accreditation
- Quality of Instruction
- Continuous curriculum improvement

# Mapping the Fulton Student Experience





# innovators & entrepreneurs





# We can help you with ...

- Academic integrity and medical withdrawals
- Working with underrepresented populations in grant proposals
- Student data
- Outreach activities
- Connecting with employers of our students
- Course logistics that cannot be handled at the program level
- Funding for an undergraduate student to help with your research -- FURI

# We can use your help with ...

- Participation in our programs
- Creating a great learning environment for your students
- Sharing your knowledge and insights on how we can better serve our students

# Policies and Procedure

- FERPA : Release of Student Information

<http://www.asu.edu/aad/manuals/ssm/ssm107-01.html>

- Academic Integrity Policy

<https://engineering.asu.edu/integrity/>

- ASU Counseling Services

<https://eoss.asu.edu/counseling>